

# SOUTH DAKOTA Ornithologists' Union

---



*Osprey*

*Yankton County 10/28/2007*

*Photo: Terry Sohl*

---

SOUTH DAKOTA  
BIRD NOTES

A small, dark-colored bird is perched on a thin branch. The bird has a white patch on its chest. To the left of the bird, there is a small cluster of yellow flowers on a stem. The background is a solid olive green color.

---

Vol. 64

September 2012

No. 3

---

**SOUTH DAKOTA BIRD NOTES**, the official publication of the South Dakota Ornithologists' Union, is sent to all members whose dues are paid for the current year. Life membership: \$400; Family Life membership (one subscription to *Bird Notes*): \$500; Sustaining membership: \$40; Regular membership: \$20; Family membership (one household; one subscription to *SD Bird Notes*): \$25; Junior/Student membership: \$10; Library Subscription: \$30. Single and back copies: Members, \$5; non-members, \$6. All dues, contributions, and orders for back copies should be sent to the SDOU Treasurer, Rosemary Draeger, 528 E. Lotta St., Sioux Falls, SD, 57105. Manuscripts for publication and change of address notices should be sent to Douglas Chapman (3108 S. Holly Ave., Sioux Falls, SD, 57105) or preferably, e-mailed to: [sfbirdclub@sio.midco.net](mailto:sfbirdclub@sio.midco.net). **SDOU website: [www.sdou.org](http://www.sdou.org)**.

©2012 South Dakota Ornithologists' Union. All Rights Reserved.

Editor..... Douglas E. Chapman, Sioux Falls  
 Youth Birding Editor..... Jason Thiele, Jamestown, ND  
 Seasonal Reports Editor ..... Jeffrey S. Palmer, Madison  
 Book Reviews..... Dan A. Tallman, Northfield, MN  
 Birding Areas (Hot Spots)..... Ricky D. Olson, Ft. Pierre  
 Associate Editors/Proofreaders: ..... Bill Draeger, Sioux Falls  
    Nancy Drilling, Rapid City  
    Linda Johnson, Sioux Falls

Vol. 64

SEPTEMBER 2012

NO. 3

SOUTH DAKOTA ORNITHOLOGISTS' UNION  
 Officers 2011 - 2012

President ..... Nancy Drilling ..... Rapid City, SD  
 Vice President ..... Ricky D. Olson..... PO BOX 622, Fort Pierre, SD 57532  
 Secretary ..... David Swanson ..... USD, Vermillion, SD 57069  
 Treasurer ..... Rosemary Draeger ..... 528 E. Lotta St., Sioux Falls, SD 57105  
 Editor ..... Douglas E. Chapman .... 3108 S. Holly Ave., Sioux Falls, SD 57105  
 Librarian..... Jeffrey S. Palmer ..... DSU, Madison, SD 57042

Elected Directors

For Term expiring 2012: Roger Dietrich, Yankton; Linda Johnson, Sioux Falls; Ricky Olson, Ft. Pierre; and Mark Otnes, Fargo, ND.

For Term expiring 2013: Douglas Chapman, Sioux Falls; Marie Curtin, Custer; Nancy Drilling, Rapid City; Gene K. Hess, Rapid City; and Mark Schmidtbauer, Sioux Falls.

For Term expiring 2014: Jennifer Fowler, Rapid City; Kent Jensen, Brookings; Ron Mabie, Pickstown; Duane Weber, Custer; and Mick Zerr, Sioux Falls.

Past President Directors

Jocelyn L. Baker, Addison Ball, L.M. Baylor, Gilbert Blankespoor, Rosemary Draeger, Ken Graupmann, Bruce Harris, Nelda Holden, Todd M. Jensen, Jeffrey S. Palmer, Rex Riis, Robb Schenck, Dennis Skadsen, David Swanson, Dan A. Tallman, J. David Williams.

**STANDING COMMITTEES OF SDOU:**

**Membership Committee:** Anna Ball, Bob Bork, Linda Johnson (chair), Mark Schmidtbauer.

**Nathaniel R. Whitney, Jr. Memorial Research Grants:** Todd M. Jensen (chair), Linda Johnson, Duane Weber.

**Rare Bird Records:** Todd M. Jensen, Ricky D. Olson, Jeffrey S. Palmer, David Swanson (chair), J. David Williams.

**Scholarships and Awards:** Jocelyn L. Baker (chair), Nelda Holden, Galen Steffen.

# PRESIDENT'S PAGE

Twice a year, South Dakota's Rare Bird Records Committee (RBRC) meets to review reports on rare bird observations submitted by birders. Created in 1987, the five-member committee is tasked with evaluating all reports to determine whether the description and details in the report provide an unquestionable identification of the species being reported. "Rare Birds" include vagrant, accidental, and casual visitors to the state, as well as species which occur regularly in the state but the observation is outside of the known distribution range or outside of the season in which the species is usually seen. Committee members are required to be extremely knowledgeable about South Dakota birds and bird identification, remain as objective as possible, and communicate their decisions in a timely and open manner. Their evaluations, along with the committee vote, are published once a year in this journal. Their decisions form the basis of the official state checklist of South Dakota birds.



Theirs is an unenviable task! As described in the introduction to the annual report, at times they have to reject a report because of inadequate documentation or incomplete details. Thus, it is the responsibility of you, the observer, to be as detailed as possible and to complete ALL sections of the Rare Bird Form! You are responsible for convincing the committee that you observed the species you claim to have seen. Detail and documentation are the keys to a good report! Read the tips on how to complete a successful Rare Bird Report (SDBN 2004:88-95), available soon on the SDOU web site.

Some will ask, "Why bother writing up a Rare Bird Report?" They argue that putting their observations on eBird and the SDOU online database is good enough and a lot quicker. Indeed, it's extremely important to enter all of your observations into these databases, and they are vetted by experts, who will probably ask you for more details. But one of the primary uses of the official state checklist is in distribution maps produced in field guides. These field guides will only use records approved by a Rare Bird Committee, not eBird records. As much as we complain about the inaccuracies of some maps, it would be much worse if observers were not diligent in submitting records of rarities.

Of course, in order to submit a report, you need to know whether your observation constitutes a rare, out-of-season, or out-of-range record. Read the seasonal and rare bird reports in SDBN (page 56 of this issue), download and study the most recent state checklist, purchase and study *Birds of South Dakota*. All of this effort will pay off when you are in the field, and you will know whether you need to take additional notes and get additional documentation on the bird in front of you. If in doubt, you can always ask one of the RBRC members if your sighting warrants a rare bird report.

So I urge you to report any observations of rare or unusual birds in South Dakota to the RBRC. Instructions and forms are posted on the SDOU.org website. Your participation will greatly aid in increasing our knowledge of the numbers and the seasonal and geographical distributions of species in the state. In addition, I encourage you to prepare short notes or articles on your observations for publication in this journal.

Finally, attend the Fall meeting in Pierre and you can meet the RBRC members and other birders from around the state. It's a great opportunity to learn from students and researchers about current bird research and meet old and new birding friends.

*Nancy Drilling*

## 2011 REPORT OF THE RARE BIRD RECORDS COMMITTEE

David L. Swanson. Department of Biology. University of South Dakota. Vermillion 57069.  
Email: david.swanson@usd.edu

The SDOU Rare Bird Records Committee (RBRC) met on 22 May 2011 at Lemmon and on 8 October 2011 at Brookings. The members of the committee were Todd Jensen, Ricky Olson, Jeffrey Palmer, David Swanson (secretary), and J. David Williams. All members either attended each meeting or voted *in absentia*.

Springer (1988. *South Dakota Bird Notes* 40:67-70) outlined the purpose and voting procedures of the RBRC. The RBRC strongly encourages observers of rare or unusual birds in South Dakota to report their observations to the secretary of the RBRC (David Swanson of Vermillion, SD), preferably via email at david.swanson@usd.edu. A *Rare Bird Report Form* is available in electronic format for this purpose from David Swanson, or a form can be downloaded from <http://www.sdou.org/>, by clicking on the *Seasonal Reporting* link and then clicking on the link for the *Rare Bird Report Form*. A summary of the type of information desired by the RBRC in a rare bird report can be found in Swanson (2004. *South Dakota Bird Notes* 56:88-95).

The RBRC requests rare bird reports for species listed as hypothetical or accidental in the state, including species reported from a portion of the state or time of year where that species is listed as accidental. A listing of birds belonging to these categories in South Dakota is provided in the latest version of the checklist of South Dakota birds, accessible at <http://www.sdou.org/> by clicking on the *Seasonal Reporting* link and then clicking on the link for the *South Dakota State Checklist*). Information regarding species listed as accidental for only a portion of the state can be found in Tallman et al. (2002. *Birds of South Dakota*, 3<sup>rd</sup> edition, SDOU, Aberdeen, SD). The RBRC regularly adds or removes species from the review list, based on current data, and these changes to the review list are reported in the annual reports of the RBRC in *South Dakota Bird Notes*. In addition, reports are requested for observations listed in the "Species Requiring Acceptance by the Rare Bird Records Committee" section in the Seasonal Reports of *South Dakota Bird Notes*. Observers whose records are accepted (Classes 1 and 2) are encouraged to publish these records in *South Dakota Bird Notes*, so details of the observation can be communicated to a wider audience.

Following are the results of the committee's action since the last report in the September 2011 issue of *South Dakota Bird Notes*. The numbers included in parentheses along with some reports indicate the committee's vote. If no numbers are listed, the vote was unanimous (5-0) or 4-0 if a committee member submitted the report. The committee wishes to emphasize that a rating of Class 3 or 4 (non-accepted record) does not imply any personal criticism of the observer. Such a rating only means that the information provided in the report, in the opinion of the committee, did not conclusively eliminate other similar species.

### CLASS 1 (Accepted - Specimen, photograph, or recording).

Tundra Swan. 11 May 2010. One adult at Hecla, Brown Co. Photographed. Bill Unzen. Late migrant.  
Trumpeter Swan. 16 March 2011. Two adults at Big Stone Power Plant, Grant Co. Photographed. Bill Unzen. Accidental east.  
Brant. 1 December 2010. One at Cow Creek Recreation Area, Sully Co. Photographed. Bill Unzen. Accidental.  
Mottled Duck. 28 July 2010. One adult male at Dayton Township, Marshall Co. Photographed. Bill Unzen. First state record.  
Barrow's Goldeneye. 15 October 2010. One adult at Big Stone Power Plant, Grant Co. Photographed. Bill Unzen. Accidental away from Black Hills.  
Barrow's Goldeneye. 27 November 2011. One adult at Big Bend Dam, Buffalo Co. Photographed. Ricky Olson and Scott Stolz. Accidental away from Black Hills.  
Surf Scoter. 30 April - 2 May 2011. One adult in alternate plumage and one in juvenile plumage at Oahe Dam Tailrace, Stanley and Hughes cos. Photographed. Ricky Olson. Accidental spring migrant.  
Black Scoter. 17 May 2009. One adult male in alternate plumage at Lake Traverse, Roberts Co. Photographed. Bill Unzen. Accidental spring migrant.  
Red-throated Loon. 8-18 November 2010. One in basic plumage at Wall Lake, Minnehaha Co. Photographed. Rosemary Draeger, Linda Johnson, Todd Jensen and Mick Zerr. Accidental.  
Eared Grebe. 8-13 December 2010. One in basic plumage at Pierre, Hughes Co. Photographed. Ricky

Olson. Latest fall record.

Yellow-crowned Night-Heron. 30 July 2004. One immature near Lake Albert, Grant Co. Photographed. Bill Unzen. Casual migrant and summer visitor.

Yellow-crowned Night-Heron. 4 June 2009. One adult near Hecla, Brown Co. Photographed. Bill Unzen. Casual migrant and summer visitor.

Yellow-crowned Night-Heron. 18 May 2011. One adult at Aberdeen, Brown Co. Photographed. Gary Olson and Daniel Streifel. Casual migrant and summer visitor.

Yellow-crowned Night-Heron. 5 June 2011. One adult near Wasta, Pennington Co. Photographed. Richard and Karen Latuchie. Casual migrant and summer visitor.

Glossy Ibis. 7-8 May 2011. One adult in alternate plumage in Hughes Co. Photographed. Ricky Olson and Kenny Miller. Casual migrant and summer visitor.

Glossy Ibis. 2 August 2011. One adult in alternate plumage at Collins Slough, Hand Co. Photographed. Doug Backlund. Casual migrant and summer visitor.

Red-shouldered Hawk. 18 April 2004. One adult at Salt Lake, Deuel and Grant cos. Photographed. Bill Unzen. Casual migrant.

Red-shouldered Hawk. 17 March 2009. One adult at Hartford Beach State Park, Roberts Co. Photographed. Bill Unzen. Casual migrant.

Red-shouldered Hawk. 2 November 2010. One at Lake Louise State Park, Hand Co. Photographed. Doug Backlund. Casual migrant.

Peregrine Falcon. 8 July 2006. One adult near Big Stone Power Plant, Grant Co. Photographed. Bill Unzen. Accidental in summer.

Peregrine Falcon. 15 July 2011. One adult near Clark, Clark Co. (4 Class 1 P, 1 Class 2). Photographed. Eric Hall. Accidental in summer.

Common Gallinule. 28 May – 20 July 2010. Four adults and five chicks near Hecla, Brown Co. Photographed. Bill Unzen. Casual migrant and summer visitor.

Long-billed Curlew. 5 May 2010. Two adults at Odessa No. 1 GPA, McPherson Co. Photographed. Bill Unzen. Accidental east.

Long-billed Curlew. 21 June 2010. Two adults at Montpelier Township, Edmunds Co. Photographed. Bill Unzen. Accidental east.

Red Knot. 26 July 2010. One adult in alternate plumage at Salt Lake, Deuel Co. Photographed. Bill Unzen. Casual migrant.

Buff-breasted Sandpiper. 23 October 2010. One juvenile in Brookings Co. Photographed. Jeffrey Palmer. Latest fall record.

Ruff. 14 May 2010. One adult male in alternate plumage in Spink Co. Photographed. Bill Unzen. Fifth state record.

Long-tailed Jaeger. 9-10 September 2009. One light morph juvenile at Mobridge, Walworth Co. (4 Class 1P, 1 Class 2). Photographed. Marshall Iliff, Brian Sullivan, Christopher Wood, Steven Kelling, Scott Stolz.

Little Gull. 18 September 2010. One juvenile at Oahe Dam, Hughes and Stanley cos. Photographed. Mark Otnes and Ricky Olson. Casual fall migrant.

Little Gull. 22-24 September 2010. One juvenile below Oahe Dam at Fisherman's Point, Hughes and Stanley cos. Photographed. Ricky Olson. Casual fall migrant.

Little Gull. 26 November 2010. One at Oahe Dam, Hughes and Stanley cos. Photographed. Doug Backlund and Ricky Olson. Casual fall migrant.

Thayer's Gull. 8 November 2009. One adult in basic plumage at Big Stone Power Plant, Grant Co. Photographed. Bill Unzen. Casual away from Missouri River.

Glaucous-winged Gull. 27 November-5 December 2010. One 3<sup>rd</sup>-cycle bird at Oahe Dam, Stanley Co. Photographed. Scott Stolz and Kenny Miller. First state record.

Lesser Black-backed Gull. 26 March 2007. One 2<sup>nd</sup>-cycle bird at Big Stone Power Plant, Grant Co. Photographed. (4 Class 1P, 1 Class 3). Bill Unzen. Accidental away from Missouri River.

Lesser Black-backed Gull. 11 April 2011. One adult at Big Stone Power Plant, Grant Co. Photographed. Bill Unzen. Accidental away from Missouri River.

Great Black-backed Gull. 26-30 November 2010. One 1<sup>st</sup>-cycle bird at Lewis and Clark Lake, Yankton Co. Photographed. Mark Brogie, David Swanson, m. obs. Third state record.

Great Black-backed Gull. 5-9 January 2011. One 1<sup>st</sup>-cycle bird at Echo Point, Stanley Co. Photographed. Ricky Olson and Kenny Miller. Fourth state record.

Ross's Gull. 26 November - 6 December 2010. One adult in basic plumage below Gavin's Point Dam, Yankton Co. Photographed. Mark Brogie, K.C. Jensen, m. obs. First state record.

Ross's Gull. 4-10 December 2010. One adult in basic plumage at Fort Randall Dam, Gregory Co. Photographed. Kenny Miller, Ron Mabie, Josh Engel, Nicholas Block. Second state record.

Sabine's Gull. 20 November-6 December 2010. One first-year bird at Big Bend Dam, Buffalo Co. Photographed. Jeffrey Palmer. Casual fall migrant (latest fall record).

Black-legged Kittiwake. 31 December 2009. One first-winter bird at Oahe Tailrace, Hughes and Stanley cos. Photographed. Bill Unzen. Latest ever fall record.

Chuck-will's-widow. 14 July 2009. Two calling at Lewis and Clark State Park, Yankton Co. Vocalization recorded. Casual migrant and summer resident.

Rufous Hummingbird. 28-29 August 2010. One juvenile female at Pierre, Hughes Co. Photographed. Kenny Miller and Ricky Olson.

Cassin's Kingbird. 30 July 2010. One adult near Dewey, Custer Co. Photographed. Bill Unzen. Casual migrant and summer resident.

Scissor-tailed Flycatcher. 14 July 2010. One adult female near Eureka, McPherson Co. Photographed. Bill Unzen. Casual migrant.

Common Raven. 10 January 2011. One in Potter Co. Photographed. Scott Stolz. Accidental.

Common Raven. 16 March 2011. One near Lake Albert, Grant Co. Photographed. Bill Unzen. Accidental.

Pacific Wren. 20-30 June 2007. Two adults and two recent fledglings at Ward Draw, Lawrence Co. (4 Class 1P, 1 Class 3). Photographed. Michael Retter and Doug Chapman. This record was originally approved by the RBRC as a Winter Wren breeding record for Ward Draw, Lawrence Co. The dissenting committee member was not completely convinced that the report and the accompanying photos of juvenile birds eliminated Winter Wren. This record constitutes a first breeding record for the newly split Pacific Wren for South Dakota.

Pacific Wren. 21 December 2010 – 23 January 2011. Two birds at Rapid City, Pennington Co. (4 Class 1P, 1 Class 3). Photographed. Michael Melius and Dan Ames. Identity of migrating and wintering birds in "Winter Wren" complex not well understood for South Dakota.

Pacific Wren. 25 June – 10 July 2011. One adult in Ward Draw, Lawrence Co. Photographed. Doug Backlund, Scott Weins and Beth Krueger. Identity of summer birds in "Winter Wren" complex not yet well understood for South Dakota.

Hermit Thrush. 25-26 June 2010. One adult in Lawrence Co. (4 Class 1P, 1 Class 3). Photographed. Scott Weins and Elizabeth Krueger. Accidental in summer.

Sage Thrasher. 1-2 July 2010. One in Mellette Co. Photographed. Eric Hall. Accidental east of far western tier of counties.

Yellow-throated Warbler. 23 January 2011. One adult male at Rapid City, Pennington Co. Photographed. Jocelyn Baker, Michael Melius, Gene Hess, Jennifer Fowler. First winter record.

Summer Tanager. 3 July 2007. One adult male at Lake Lakota, Lincoln Co. Photographed. Bill Unzen. Casual migrant and summer visitor.

Painted Bunting. 26 May 2011. One adult female at Slim Buttes, Harding Co. Photographed. Doug Backlund. Third state record.

Henslow's Sparrow. 20 July 2007. One at Butler Township, Day Co. Photographed. Bill Unzen. Casual migrant and summer visitor.

Henslow's Sparrow. 30 July 2009. One singing at Bullhead Lake, Roberts Co. Vocalization recorded. Bill Unzen. Casual migrant and summer visitor.

Henslow's Sparrow. 22-24 June 2010. One singing adult near Mound City, Campbell Co. Photographed and vocalization recorded. Bill Unzen. Casual migrant and summer visitor.

McCown's Longspur. 2 June 2009. One adult male in alternate plumage in Butte Co. Photographed. Bill Unzen. Casual migrant and summer visitor.

Eastern Meadowlark. 5 April 2011. One singing adult near Pryor Slough, Grant Co. Photographed and vocalizations recorded (4 Class 1PR, 1 Class 2). Bill Unzen. Casual east.

## **CLASS 2 (Accepted – Satisfactory written description).**

Tundra Swan. 21 May 2010. One adult at Tulare, Spink Co. (3 Class 1P, 2 Class 2). Photographed. The committee members rating the record Class 2 felt that the photos were supportive, but not conclusive, for Tundra Swan. Bill Unzen. Latest ever spring record.

Red-throated Loon. 25 March 2011. One in basic plumage in Yankton Co. (3 Class 1P, 1 Class 2, 1 Class 3). Photographed. Dissenting committee members felt that the photo was of relatively poor quality and supported the identification, but was not diagnostic, resulting in the Class 2 rating. Bill Huser. Accidental.

Yellow-crowned Night-Heron. 10 May 2010. One adult at Putney Slough, Brown Co. (4 Class 2, 1 Class 3). Bill Unzen. Casual migrant and summer visitor.

Common Gallinule. 11 May 2011. One adult at Lake Andes NWR, Charles Mix Co. Ron Mabie. Casual migrant and summer visitor.

Wilson's Phalarope. 14 November 2009. One in basic plumage at Lake Whitewood, Kingsbury Co. Jeffrey Palmer. Latest fall record.

Herring Gull. 22 June 2010. One adult in Campbell Co. Bill Unzen. Casual summer resident.

Thayer's Gull. 26 March 2007. One adult at Mud Lake, Roberts Co. Photographed. (2 Class 1P, 2 Class 2, 1 Class 3). Bill Unzen. The photos submitted with the report were of poor quality, so some committee members felt that other gull species could not be conclusively eliminated by the photos. Because two votes were not 1P ratings, the report did not satisfy the 1P requirement, but since one of the other two votes was a class 2 rating, the report was accepted 4-1. Casual away from Missouri River.

Arctic Tern. 6 May 2010. One adult in alternate plumage at LaFramboise Island, Hughes and Stanley cos. Photographed. (1 Class 1P, 3 Class 2, 1 Class 3). Bill Unzen. Several committee members felt that the photo was of relatively poor quality and supported the identification, but was not diagnostic, resulting in the Class 2 rating. Fourth state record.

Chuck-will's-widow. 18 May 2010. One calling at Archery Range at Lewis and Clark State Park, Yankton Co. Mark Otnes. Casual migrant and summer resident.

Marsh Wren. 15 February 2011. One at Hot Brook Canyon, Fall River Co. Michael Melius. Casual in winter – only one previous February record.

Rock Wren. 16 May 2010. One adult at Great Bear Recreation Park, Sioux Falls, Minnehaha Co. Todd Jensen. Accidental east.

Worm-eating Warbler. 18 May 2011. One adult at Lake Hiddenwood State Park, Walworth Co. Mark Otnes. Casual migrant east.

Louisiana Waterthrush. 14 July 2009. One adult at Appley-von Hagel Wetland, Union Co. Photographed. (2 Class 1P, 2 Class 2, 1 Class 3). Bill Unzen. The bird in the photo showed a strong whitish supercilium that broadened toward the nape. However, the legs were not very pink, little buffy color was present on the flanks, and the throat was not visible in the photo. Some committee members, therefore, felt that the photo was supportive of the identification of Louisiana Waterthrush, but did not conclusively eliminate Northern Waterthrush. Because two votes were not 1P ratings, the report did not satisfy the 1P requirement, but since one of the other two votes were a class 2 rating, the report was accepted 4-1. Accidental.

Hooded Warbler. 14 July 2009. One adult male at Appley-von Hagel Wetland, Union Co. Photographed. Bill Unzen. Accidental in summer.

Cassin's Sparrow. 29 May 2010. One singing adult in Fall River Co. Robert Baez. Casual summer resident.

White-crowned Sparrow. 23 June 2010. One in Custer Co. (4 Class 2, 1 Class 3). Robert Baez. Accidental in summer.

McCown's Longspur. 11 April 2010. One adult male in Butte Co. Nancy Drilling. Casual migrant and summer visitor.

**CLASS 3 (Not accepted – Identification possibly correct but description not completely convincing).**

Glossy Ibis. 4 August 2010. One in Marshall Co. (4 Class 3, 1 Class 2). The report did not distinguish whether the bird had adult or juvenile plumage, which made it difficult to evaluate the plumage and soft part details in the report. In addition, there was no mention of the thin pale outline to the facial skin patch evident in Glossy Ibis. Thus, the dissenting committee members felt that White-faced Ibis was not conclusively eliminated.

Snowy Plover. 6 May 2010. One in alternate plumage at Hyde WPA, Hughes Co. (4 Class 3, 1 Class 2). Photographed. Dissenting committee members felt that the photos, which were of rather poor quality, were not completely supportive of the description in the report, noting that the breast band on the photos appeared heavy for a typical Snowy Plover and the bird in the photos appears to lack dark coloration behind the eye.

Bewick's Wren. 8 July 2010. One in Craven Canyon, Fall River Co. The details in this report were incomplete and did not conclusively eliminate Carolina or Rock wrens.

Western Bluebird. 26 July 2010. One adult male in Edgemont, Fall River Co. (4 Class 3, 1 Class 4). The reported bird was observed in "harsh" light, so no blue was actually observed in the plumage. In addition, no mention was made in the report of the rufous coloration to the scapulars characteristic of Western Bluebird, and little description of the upperparts was provided. The report thus did not eliminate several species, including Eastern Bluebird, Townsend's Solitaire, or Spotted Towhee.

Baird's Sparrow. 26 May 2010. One singing adult in Fall River Co. Details were incomplete in the report and the description doesn't eliminate Brewer's or Savannah sparrows or female Lark Bunting.

Henslow's Sparrow. 16 June 2011. One singing bird at Bass Dam, Lyman Co. This report involved heard only descriptions, with no description of the song outside of "typical." The committee felt that this description was too incomplete to accept the record.

Henslow's Sparrow. 28-30 June 2011. One singing bird in Hughes Co. This report involved heard

only descriptions, with no description of the song outside of “typical.” The committee felt that this description was too incomplete to accept the record.

Pine Grosbeak. 22 June 2010. One male at Pringle, Custer Co. The report was based on a brief view from in front of the bird. The description provided in the report did not fully eliminate crossbills, which are more likely in the pine-dominated habitat in this region.

Hoary Redpoll. 17 March 2009. One adult male near Waubay, Day Co. (4 Class 3, 1 Class 2). The photos accompanying the report were of rather poor quality. Some features of the photos were suggestive of Hoary Redpoll (general overall pale appearance and lightly streaked sides). The dissenting committee members, however, felt that some features in the photos (e.g., bill lacking “pushed-in” appearance) were not entirely consistent with Hoary Redpoll, and the diagnostic white rump and undertail covert pattern were not seen well. Thus, the committee felt that Common Redpoll could not be conclusively eliminated.

#### **CLASS 4 (Not accepted – Identification probably or certainly incorrect).**

Band-tailed Pigeon. 13 July 2010. Two at Roby Canyon, Custer Co. (2 Class 4, 3 Class 3). This report consisted of a brief sighting and identification details were incomplete in the report, so the committee felt that this bird was very likely a Rock Pigeon, a species which occurs with regularity at this location.

Scott’s Oriole. 23 May 2010. One adult at Rosebud, Todd Co. (3 Class 4, 2 Class 3). The report did not mention the extent of black on the breast, the pattern of white in the wing, or the yellow wing coverts. The mature cottonwood habitat is also atypical for this species, which usually occupies more shrubby habitats. The committee members felt that an aberrantly yellow-plumaged Baltimore Oriole was not eliminated, and several members thought that the bird in the report was just such an atypical Baltimore Oriole. Thus, the Class 4 rating.

#### **OTHER BUSINESS**

The committee established a protocol for voting on records of birds observed by committee members. The following protocol was approved: *If less than a majority of RBRC members observe a rare bird, then those members are excluded from voting on that record; if the majority of RBRC members observe a rare bird, then all committee members may vote.*

The committee discussed deleting several species from the review list because of a number of recent records. The following species were removed from the review list for the state:

- Yellow-crowned Night-Heron (East River only)
- Glossy Ibis (East River only)
- Common Gallinule (Brown Co. only)
- Red Knot
- Little Gull (along the Missouri River only)
- Lesser Black-backed Gull (East River only)
- Cassin’s Kingbird (southwestern South Dakota only)
- Scissor-tailed Flycatcher
- Worm-eating Warbler
- Hooded Warbler
- Prothonotary Warbler (East River only)
- Henslow’s Sparrow (East River only)

Finally, the committee decided that the RBRC secretary will circulate reports as soon as they are received to all RBRC members. Members will then rate the reports and send the ratings back to the secretary. If everyone agrees on the rating, then that will be the official rating for the report, and the committee will not act on it again at the meeting. However, if not everyone agrees, or if some members raise concerns regarding the report, the record will be discussed in full at an RBRC meeting prior to delivering a final rating.



# FLEDGLING TRACTS

JASON THIELE

## *Bird Buccaneers*

Not too long ago I was asked a surprising question by a coworker of mine. Well, I guess the question itself wasn't all that surprising. Truly, it's a wonder that I haven't been asked it before—"Jason, do you ever get tired of birding?" The source of the question was more surprising, since the person asking it was a bit of a bird enthusiast herself—or at least she liked birds enough to take a job surveying them for a summer. Nevertheless, it was a fair question, I suppose. During the few weeks before my field season started, as soon as each workday was done, I would walk across the parking lot from the Northern Prairie Wildlife Research Center to the bunkhouse where the seasonal employees live, quickly scarf down a sandwich, and head off to one of my favorite migrant traps within a short drive of the Center to bird until dark. I guess it makes sense that someone would expect me to eventually get bored with this routine.

At the time, it was easy to tell her that I didn't get bored with birding. After all, it was spring migration, so new birds were showing up nearly every day. In addition, I was birding in North Dakota for the first time, so I got the added satisfaction of building up a new state checklist. But migration time is certainly not the only season that I spend considerable time afield looking for birds. I have no problem seeing the same species day after day during the relatively mundane summer and winter months. For me, it's fun to just watch birds being birds. While I like trying to build up big checklists as much as the next birder, I think what really keeps me hooked on this hobby is the opportunity to continually learn more about bird behavior.

In the last few years, my observations of birds have made me more aware of a peculiar bird behavior called kleptoparasitism. Kleptoparasitism is the practice of making another organism surrender a meal that it has already procured for itself. Kleptoparasitism is frequently called "piracy" as well.

A wide variety of birds have been documented engaging in kleptoparasitism. No known species of birds are obligate kleptoparasites, but it is much more common in some taxa than it is in others. Several factors have probably played into the evolution of this behavior among some bird species. The presence of many potential hosts is one driving force that has been suggested by evolutionary biologists. Many seabirds are kleptoparasites, perhaps because they can take advantage of certain species returning to large breeding colonies with food for their offspring. The type of food is another factor in the evolution of piracy. Kleptoparasitism requires relatively large food items that require a long "handling time," or time spent catching and swallowing them. A kleptoparasite has to be able to see its host acquire a tasty morsel, and it must have enough time to have a reasonable chance at making the host drop the food. Large food items probably also ensure that the amount of energy spent stealing is worth the risk. Habitat is another factor that has favored kleptoparasitism among certain taxa. Pirate birds are usually species of open habitats, such as ocean, tundra, and grassland, rather than forest birds. Piracy is a visual activity, and it is much more difficult to spot potential hosts in a closed environment. Finally, some research has also suggested that kleptoparasitism did not evolve until the bird brain had reached a relatively advanced state of development. Most of the groups of birds that frequently engage in kleptoparasitism are those known to be relatively intelligent (for birds, anyway—there's a reason no one wants to be called a "bird brain") with a high capacity for learning.

The first time I remember observing kleptoparasitism was in the spring of 2008, when I got to spend about 10 days in Puerto Rico as part of a field ecology course that I took while a student at the University of Nebraska. One of the most memorable parts of that trip was standing on the old fort at San Juan and watching Brown Pelicans fishing offshore. I was captivated by the sight of these huge birds making spectacular, head-first dives into the ocean. Equally fascinating to watch, however, were the dozens of gulls swimming in the water near the pelicans. Every time a pelican plunged into the water, it would be harassed by a gang of the gulls trying to take some of its hard-earned fish. Often a small fish or two would spill out of a pelican's bill as it lifted its head out of the water, and the fish would be quickly snapped up by the gulls. However, if this didn't happen, the gulls started pecking at the pelican's gular pouch in an attempt to make it open its mouth. It worked more than once. The gulls knew what they were doing.

Gulls are notorious pirates, and many species take opportunities to snatch a meal away from other birds. Many species serve as hosts for pirate gulls, including various waterfowl, shorebirds, terns,

alcids, other gull species, conspecifics, and more. Gulls have many strategies for robbing their hosts, whether swooping at them from the air, charging at them on the shore, pursuing them through the air, or waiting within their breeding colonies to intercept food being passed to chicks.

Among gulls, the most specialized kleptoparasites are the skuas and jaegers. One species is even named the Parasitic Jaeger for its habit of stealing from other birds. Skuas and jaegers are birds of the Arctic and Antarctic regions, and they generally remain at sea except for the short breeding season. While on land, they are highly predatory, taking advantage of a seasonal banquet of food such as lemmings and the chicks of various seabirds. However, when prey become scarce during the long winter, the sea becomes the main source of food, and piracy is perhaps an efficient foraging strategy. A skua or jaeger can easily outfly almost any bird that it targets, moving in to bite at the victim's back, belly, wings, and/or tail until it drops its food. Often the pirate will catch the dropped meal in mid-air.

The frigatebirds represent another group of birds that is highly specialized for kleptoparasitism. I got to see Magnificent Frigatebirds when I was in Puerto Rico, and although I did not actually see them in action, it is easy to imagine how such a bird could be a terror to other birds. They are quite sinister in appearance, and they are very well adapted for a pirate lifestyle. With a wingspan of well over two meters, a streamlined body, and a forked tail, they can glide almost effortlessly over the waves, watching for a bird carrying a potential meal. Frigatebirds frequently live near colonies of boobies, ignoring them as they fly out to sea but giving chase as they return to the colonies with fish or other food. Then they shift into pursuit gear, and their speed and maneuverability are easily up to the task. Frigatebirds can be relentless in their pursuits, sometimes pulling out the tail feathers of their hosts in flight. Often, a frigatebird will force its host down to the water, causing the victim to dive for safety and drop or regurgitate its food in the process.

One need not travel to the ocean to observe avian kleptoparasitism, however. Several South Dakota birds are known to engage in this behavior. In fact, my main reason for writing this article is to share with you a couple of interesting events that I've witnessed in South Dakota.

I previously mentioned the Brown Pelican as a victim of kleptoparasitism, but its larger cousin, the American White Pelican, is a species that is more often the bully than the victim, as I recently learned. When the winter of 2010-2011 was finally starting to break, I was driving around Brookings County trying to find a place with some waterfowl. Finally, I found a large group of birds at Lake Campbell in a sizeable patch of open water. The fishing must have been good, because the lake was loaded with Common Mergansers, Double-crested Cormorants, American White Pelicans, and a couple of Common Loons. The cormorants were having particularly good luck, and I was not the only one noticing their success. As one cormorant resurfaced with a bullhead in its bill, a pelican came charging across the water from about ten meters away. The cormorant tried to swim away, but the pelican had already closed the gap. For a brief moment, I was certain the pelican was going to try to swallow the cormorant, but as the huge white bird opened its mouth, the cormorant dived. The pelican plunged its bill into the water, and when it pulled its head back out, I could see a fish in its pouch. As the fish slid down the pelican's gullet, the cormorant appeared above the water again, but this time with an empty bill.

A brief literature search revealed to me that Double-crested Cormorants are by no means the only birds kleptoparasitized by American White Pelicans. Gulls, ducks, herons, and even Ospreys have lost meals to these behemoths. American White Pelicans use a variety of methods to acquire other birds' meals. Charging across the water, as I described above, is a frequently-used approach. Other ornithologists have observed them diving out of the air to startle birds feeding on the water. American White Pelicans have also been seen pursuing other birds through the air in attempts to steal fish, although I suspect this method is somewhat less effective than the others.

Raptors are also known to pirate meals from time to time, and they are certainly equipped for the task, with the speed and armament to make another bird think that just finding another meal might be a better alternative to holding onto the one it has. Of South Dakota's raptors, the one that is probably best known as a pirate is the Bald Eagle. Legend has it that Ben Franklin and others were against the selection of the Bald Eagle as a national symbol because it often prefers scavenging or piracy to hunting. One of the most common victims of Bald Eagle thievery is the Osprey. With its soaked feathers and some extra weight in its talons, an Osprey that has just caught a fish is an easy target for the larger eagle to overpower. My brief literature search also revealed Ferruginous Hawks, Red-

tailed Hawks, Rough-legged Hawks, Golden Eagles, Peregrine Falcons, and several species of gulls as documented hosts of pirate Bald Eagles.

South Dakota's other eagle species, the Golden Eagle, is more of a pure predator than its white-headed relative, but it will also go into pirate mode on occasion. During the summer of 2011, I happened to be in the right place at the right time to see one of these magnificent raptors rob a meal. My technician, Alex, and I were searching for Burrowing Owls at a prairie dog colony on the Grand River National Grasslands, and I noticed a Ferruginous Hawk standing over a prairie dog carcass, tearing it apart. Since the Ferruginous Hawk is my favorite hawk, it diverted my attention from the job at hand for a couple of minutes, but then I resumed searching for owls. Alex must have kept watching the bloody scene, for all of a sudden, he said, "That hawk is coming right at us!" Sure enough, I looked to my right and saw the Ferruginous Hawk flying toward our truck as fast as it could go. I didn't really have time to process what was going on, but for some reason, I looked up, and I saw a brown blur come streaking out of the sky. It was a Golden Eagle, and it landed right where the hawk had been feeding, picked up the remnants of the prairie dog that the hawk had dropped, and flew away. In my few years of serious birding, this probably goes down as my favorite story to tell to birders and non-birders alike. The speed of the eagle in its dive was incredible—I read later than Golden Eagles can exceed 100 miles per hour in a dive, and I have no reason to doubt it.

Kleptoparasitism is just one of many interesting behaviors exhibited by birds. I encourage all South Dakota birders to watch for bird pirates and to report their stories, whether as a short article in *Bird Notes* or a post on the sd-birds listserv. After all, birding isn't just about what species you see, it's also about what you see the birds doing.

#### References / For further reading:

- Bélisle, M., and J.-F. Giroux. 1995. Predation and kleptoparasitism by migrating Parasitic Jaegers. *Condor* 97:771-781.
- Brockmann, H. J., and C. J. Barnard. 1979. Kleptoparasitism in birds. *Animal Behaviour* 27:487-514.
- Grace, J. W. 1980. Kleptoparasitism by Ring-billed Gulls of wintering waterfowl. *Wilson Bulletin* 92:246-248.
- Johnson, W. P., P. R. Garrettson, and F. C. Rohwer. 1996. Confirmation of kleptoparasitism by American White Pelicans on Great Blue Herons. *Colonial Waterbirds* 19:262-263.
- Jones, O. E., III, P. M. Castelli, and C. K. Williams. 2011. Observed Herring Gull kleptoparasitism of American Black Ducks. *Journal of Fish and Wildlife Management* 2:196-198.
- Jorde, D. G., and G. R. Lingle. 1988. Kleptoparasitism by Bald Eagles wintering in south-central Nebraska. *Journal of Field Ornithology* 59:183-188.
- Khatchikian, C. E., M. Favero, and A. I. Vassallo. 2002. Kleptoparasitism by Brown-hooded Gulls and Grey-hooded Gulls on American Oystercatchers. *Waterbirds* 25:137-141.
- Martinez-Abraín, A., J. Gonzalez-Solis, V. Pedrocchi, M. Genovart, J. C. Abella, X. Ruiz, J. Jimenez, and D. Oro. 2003. Kleptoparasitism, disturbance, and predation of Yellow-legged Gulls on Audouin's Gulls in three colonies of the western Mediterranean. *Scientia Marina* 67:89-94.
- Maxson, S. J., and N. P. Bernstein. 1982. Kleptoparasitism by South Polar Skuas on Blue-eyed Shags in Antarctica. *Wilson Bulletin* 94:269-281.
- Morand-Ferron, J., D. Sol, and L. Lefebvre. 2007. Food stealing in birds: brain or brawn? *Animal Behaviour* 74:1725-1734.
- Nesbitt, S. A., and M. J. Folk. 2003. Kleptoparasitism of Great Blue Herons by American White Pelicans. *Florida Field Naturalist* 31:19-20.
- O'Malley, J. B. E., and R. M. Evans. 1983. Kleptoparasitism and associated foraging behaviors in American White Pelicans. *Colonial Waterbirds* 6:126-129.
- Osorno, J. L., R. Torres, and C. M. Garcia. 1992. Kleptoparasitic behavior of the Magnificent Frigatebird: sex bias and success. *Condor* 94:692-698.
- Paulson, D. R. 1985. The importance of open habitat in the occurrence of kleptoparasitism. *Auk* 102:637-639.
- Sinclair, J. 1990. Interactions between Short-eared Owls and Northern Harriers in Van Buren County. *Iowa Bird Life* 60:60-62.
- Todd, C. S., L. S. Young, R. B. Owen, Jr., and F. J. Gramlich. 1982. Food habits of Bald Eagles in Maine. *Journal of Wildlife Management* 46:636-645.
- Vickery, J. A., and M. D. L. Brooke. 1994. The kleptoparasitic interactions between Great Frigatebirds and Masked Boobies on Henderson Island, South Pacific. *Condor* 96:331-340.

# SEASONAL REPORTS

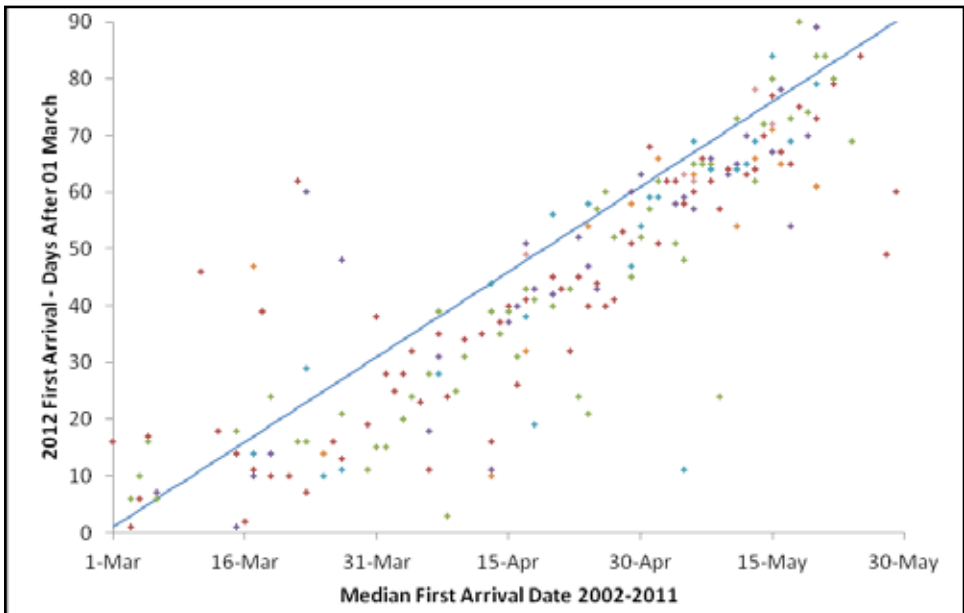
## The 2012 Spring Season

Compiled By: Jeffrey S. Palmer  
01 March 2012 to 31 May 2012

College of Arts & Sciences  
Dakota State University  
Madison, SD 57042

Crushing the previous high of 331 species in 2005, there were **342** species, including 12 rarities, reported during the season. The ten-year (2002-2011) average is 322. Below, I have tried to highlight the more significant sightings (dates that are among the earliest/latest included in the online database and species that are out of range). For early/late migration dates, I have listed the three earliest/latest dates (by county); however, if these did not include a sighting East River, West River, and along the Missouri River, I have given the earliest/latest reported date in the missing region also. Finally, included at the end is a list of species (8) that were not reported this year and might be expected during the Spring Season. A species is placed on the list if it was not reported this year but had been reported during spring in at least 2 of the previous 5 years. Numbers in parentheses indicates the number of consecutive years (up to 4) that the species has appeared on the list during the season. Not reported during the Spring Season during the last 5 years, **Carolina Wren** was removed from this list.

For species with early dates given in this report, the graph below shows the first arrival date reported during the current season (days after 01 March) versus the median first arrival date over the previous ten years (2002-2011). Data points above the line represent species whose earliest reported first arrival this spring was later than the 10-year median and points below the line correspond to species with first arrival spring dates that were earlier than the 10-year median.



**Greater White-fronted Goose** Early: 01 Mar Charles Mix RM; 02 Mar Stanley DB; 04 Mar Yankton RND; 06 Mar Lake JSP; 14 Apr Butte BJU ... Late: 20 Apr Sully KM; 19 Apr Edmunds GO; 12 Apr Spink BJU

**Snow Goose** Early: 02 Mar Charles Mix RM; 02 Mar Clay GJS; 02 Mar Stanley DB; 03 Mar Douglas KP; 09 Mar Tripp SS

**Ross's Goose** Early: 02 Mar Charles Mix RM; 02 Mar Stanley DB; 03 Mar Douglas KP; 09 Mar Tripp KP ... Late: **18 May Potter BJU**; 22 Apr Harding CEM; 16 Apr Hand SS

**Cackling Goose** Late: **01 May Stanley BJU**; 20 Apr Marshall MO; 31 Mar Deuel BJU; 14 Mar Meade RSL

**Canada Goose** Confirmed Breeding: 08 Apr Brookings (ON) ND

**Trumpeter Swan** reported 16 Mar Campbell BJU; 17 Mar Brown BJU; 25 Mar Charles Mix KP, SS; 28 Mar Charles Mix KP; 14 Apr Charles Mix KP

**Tundra Swan** Early: **10 Mar Lincoln CA**; 14 Mar Faulk BJU; 14 Mar Spink BJU; 16 Mar Campbell BJU ... Late: 20 Apr Marshall MO, GO; 12 Apr Codington BJU; 31 Mar Roberts MO

**Wood Duck** Early: 05 Mar Pennington JLB; 06 Mar Lake JSP; 09 Mar Gregory SS; 09 Mar Tripp SS

**Gadwall** Early: 01 Mar Pennington JLB; 04 Mar Yankton RND; 06 Mar Brown GO; 06 Mar Lake JSP

**American Wigeon** Early: 01 Mar Pennington JLB; 06 Mar Brown GO; 06 Mar Lake JSP; 08 Mar Yankton RND

**American Black Duck** All Reports: 16 Mar Dewey BJU; 12 Apr Codington BJU; **28 May Clark BJU**

**Blue-winged Teal** Early: 02 Mar Charles Mix RM; 10 Mar Brown GO; 13 Mar Douglas KP; 25 Mar Pennington RSL

**Cinnamon Teal** Early: 08 Apr Meade JLB; 11 Apr Hughes RDO; 23 Apr Fall River BJU; 03 May Deuel BJU

**Northern Shoveler** Early: 06 Mar Brown GO; 06 Mar Lake JSP; 07 Mar Grant BJU; 09 Mar Charles Mix RM; 09 Mar Tripp SS

**Northern Pintail** Early: 01 Mar Hughes RDO; 02 Mar Charles Mix RM; 02 Mar Stanley DB; 06 Mar Brown GO; 06 Mar Lake JSP; 07 Mar Butte JLB

**Green-winged Teal** Early: 02 Mar Charles Mix RM; 06 Mar Lake JSP; 07 Mar Stanley RDO; 14 Mar Meade RSL

**Canvasback** Early: 01 Mar Pennington JLB; 06 Mar Lake JSP; 07 Mar Meade JLB; 09 Mar Charles Mix RM

**Redhead** Early: 01 Mar Butte ND; 01 Mar Pennington JLB; 02 Mar Charles Mix RM; 06 Mar Brown GO; 06 Mar Lake JSP

**Ring-necked Duck** Early: 02 Mar Charles Mix RM; 04 Mar Yankton RND; 05 Mar Brown GO; 06 Mar Pennington JLB

**Greater Scaup** Early: 14 Mar Edmunds BJU; 14 Mar Faulk BJU; 14 Mar Spink BJU; 15 Mar Potter BJU; 15 Mar Sully BJU ... Late: **08 May Walworth BJU**; 01 May Stanley BJU; 21 Apr Clay DS; 14 Apr Hand DB

**Lesser Scaup** Early: 03 Mar Charles Mix RM; 04 Mar Yankton RND; 06 Mar Lake JSP; 08 Mar Meade RSL

**Long-tailed Duck** Late: **11 Apr Gregory RM**; 08 Apr Charles Mix KP; 15 Mar Potter BJU

**Bufflehead** Early: 01 Mar Pennington JLB; 05 Mar Charles Mix RM; 06 Mar Lake JSP ... Late: 30 May Brookings BJU; 05 May Grant BJU; 05 May Deuel BJU; 03 May Meade RSL; 14 Apr Hughes RSL; 14 Apr Charles Mix KP

**Common Goldeneye** Late: 21 Apr Meade JLB; 19 Apr Pennington BJU; 17 Apr Lawrence BJU; 12 Apr Hand BJU; 12 Apr Codington BJU; 01 Apr Hughes KM

**Hooded Merganser** Early: 06 Mar Brown GO; 06 Mar Lake JSP; 07 Mar Grant BJU; 08 Mar Charles Mix RM; 08 Apr Meade JLB ... Late: 25 May Codington BJU; 19 May Charles Mix RM; 18 May Walworth BJU; 18 May Potter BJU; 18 May Brown BJU; 12 May Harding BJU

**Common Merganser** Late: 30 May Turner KP; 28 May Pennington JLB; 22 May Day BJU; 18 May Dewey BJU

**Red-breasted Merganser** Early: 04 Mar Yankton RND; 14 Mar Edmunds BJU; 14 Mar Spink BJU; 23 Apr Fall River BJU ... Late: 08 May Walworth BJU; 01 May Clay GJS; 22 Apr Brookings JT

**Ruddy Duck** Early: 06 Mar Lake JSP; 10 Mar Clay DS; 13 Mar Charles Mix RM; 27 Mar Meade JLB

**Greater Sage-Grouse** Confirmed Breeding: 12 May Harding (PE) BJU

**Greater Prairie-Chicken** reported 11 Mar Davison KP; 24 Mar Bennett ND; 18 Apr Kingsbury RDO, SS

**Northern Bobwhite** All Reports: **09 Apr Gregory RM**; 10 May Gregory RM

**Common Loon** Early: 14 Mar Spink BJU; 23 Mar Charles Mix RM; 26 Mar Stanley RDO, SS; 10 Apr Meade JLB ... Late: 24 May Gregory RM; 20 May Charles Mix RSL; 15 May Stanley KM; 12 May Pennington RSL; 08 May Faulk BJU

**Pied-billed Grebe** Early: 14 Mar Clark BJU; 15 Mar Potter BJU; 15 Mar Sully BJU; 13 Apr Meade BJU

**Horned Grebe** Early: **14 Mar Stanley DB, RDO**; 17 Mar Hughes RSL; 17 Mar Sully RSL; 23 Mar Hand DB; 29 Mar Butte JLB ... Late: 10 May Harding BJU; 08 May Walworth BJU; 05 May Deuel BJU

**Red-necked Grebe** Early: **09 Apr Marshall GO**; 12 Apr Codington BJU; 12 Apr Spink BJU; 13 Apr Sully BJU

**Eared Grebe** Early: 25 Mar Charles Mix RM; 30 Mar Hand DB; 31 Mar Butte EK

**Western Grebe** Early: 25 Mar Charles Mix SS; 31 Mar Lake JSP; 06 Apr Hand DB; 11 Apr Meade RSL

**Clark's Grebe** Early: **14 Apr Butte BJU**; **16 Apr Hand SS**; 22 Apr Marshall GO; 26 Apr Hughes JLB; 26 Apr Stanley RDO

**American White Pelican** Early: **13 Mar Charles Mix KP**; 16 Mar Campbell BJU; 20 Mar Deuel JL; 24 Mar Bennett ND

**Double-crested Cormorant** Early: 07 Mar Grant BJU; 13 Mar Charles Mix KP; 16 Mar Campbell BJU; 16 Mar Walworth BJU; 24 Mar Bennett ND

**American Bittern** Early: 12 Apr Hughes KM; 20 Apr Hand DB; 20 Apr Marshall MO

**Least Bittern** All Reports: **29 Apr Aurora ND**; **18 May Brown BJU**; 25 May Brown JSP, RDO; 26 May Brown GO

**Great Blue Heron** Early: 10 Mar Charles Mix KP; 14 Mar Spink BJU; 15 Mar Hughes BJU; 18 Mar Pennington RSL

**Great Egret** Early: **23 Mar Brookings JT**; 03 Apr Marshall GO; 05 Apr Sully JLB

**Snowy Egret** Early: **09 Apr Hutchinson KP**; 12 Apr Clark BJU; 18 Apr Brown GO; 18 Apr Kingsbury RDO, SS; 28 Apr Charles Mix KP

**Little Blue Heron** Early: 13 May Sully RDO; 17 May Brown GO; 19 May Charles Mix KP

**Tricolored Heron** reported **16 – 25 May Brown GO, RDO, JSP, ND**

**Cattle Egret** Early: **10 Apr Sully ND**; 13 Apr Hand DB; 14 Apr Hyde RDO; 27 Apr Fall River BJU

**Green Heron** Early: 27 Apr Brookings JT; 01 May Brown GO; 02 May Hand BJU; 02 May Kingsbury BJU; 05 May Charles Mix ND

**Black-crowned Night-Heron** Early: 10 Apr Hand DB; 12 Apr Hyde BJU; 13 Apr Brookings JT; 13 Apr Clark JLB; 14 Apr Butte BJU

**Glossy Ibis** Early: **18 Apr Brown GO, RDO**; **08 May Walworth BJU**

**White-faced Ibis** Early: 12 Apr Hand BJU; 12 Apr Hughes JLB; 12 Apr Hyde BJU; 29 Apr Meade JLB

**Turkey Vulture** Early: **10 Mar Yankton RND**; 19 Mar Clay GJS; 21 Mar Charles Mix RM; 28 Mar Grant BJU; 29 Mar Lawrence EK

**Osprey** Early: **01 Apr Pennington ND**; 03 Apr Hand DB; 03 Apr Stanley KM

**Northern Harrier** Early: 01 Mar Harding CEM; 01 Mar Jones DB; 01 Mar Stanley RDO; 03 Mar Douglas KP

**Sharp-shinned Hawk** Late: 09 May Harding BJU; 04 May Marshall MO; 28 Apr Custer BJU; 13 Apr Stanley BJU

**Northern Goshawk** Late: 10 May Harding BJU; 23 Mar Hand DB; 18 Mar Stanley KM

**Broad-winged Hawk** Early: 20 Apr Brookings JT; 20 Apr Marshall MO; 21 Apr Harding ND; 29 Apr Stanley KM ... Late: 28 May Walworth MO; 26 May Brookings JT; 24 May Brown BJU; 16 May Butte BJU

**Swainson's Hawk** Early: 07 Apr Charles Mix RM; 09 Apr Marshall GO; 11 Apr Hand DB; 13 Apr Haakon BJU

**Ferruginous Hawk** Early: 01 Mar Harding CEM; 01 Mar Jones DB; 03 Mar Lyman RDO; 12 Apr Spink BJU

**Rough-legged Hawk** Late: 23 Apr Fall River BJU; 14 Apr Harding CEM; 02 Apr Hand DB; 30 Mar Sully KM

**Golden Eagle** Late: 17 Mar Hughes RSL; 16 Mar Walworth BJU; 16 Mar Dewey BJU; 16 Mar Corson BJU; 16 Mar Campbell BJU; 15 Mar Hand DB

**Merlin** Late: 08 May Hughes DB; 08 May Harding ND; 30 Apr Hand DB

**Gyr Falcon** All Reports: 04 Mar Hughes KM; 15 Mar Hughes BJU; 15 Mar Potter BJU; 16 Mar Hughes SS

**Peregrine Falcon** Early: **19 Mar Minnehaha JL**; 13 Apr Hughes BJU; 17 Apr Hand DB; 23 Apr Fall River BJU ... Late: 26 May Charles Mix RM; 25 May Clark BJU; 25 May Brown RDO, ND; 17 May Butte BJU

**Prairie Falcon** Late: 21 Apr Kingsbury MRZ; 17 Mar McPherson BJU; 17 Mar Brown BJU; 16 Mar Walworth BJU; 16 Mar Dewey BJU; 16 Mar Campbell BJU

**Virginia Rail** Early: 01 May Hughes BJU; 01 May Pennington BJU; 02 May Beadle BJU; 02 May Hand BJU; 02 May Kingsbury BJU

**Sora** Early: **20 Apr Brown GO, RDO**; 29 Apr Aurora ND; 29 Apr Fall River BJU; 29 Apr Stanley KM

**American Coot** Early: 01 Mar Pennington JLB; 06 Mar Lake JSP; 07 Mar Grant BJU; 08 Mar Yankton RND

**Sandhill Crane** Early: 10 Mar Clay DS; 13 Mar Charles Mix RM; 14 Mar Codington BJU; 14 Mar Spink BJU; 19 Mar Jones SS ... Late: 02 May Lake BJU; 29 Apr Brule KP; 28 Apr Hand DB; 25 Apr Meade ND

**Whooping Crane** All Reports: **26 Mar Beadle ND**; **27 Mar Beadle JLB**; **28 Mar Beadle SS**; 06 Apr Aurora KP; 10 Apr Charles Mix RM; 18 Apr Hand DB

**Black-bellied Plover** Early: 07 May Deuel BJU; 09 May Meade JLB; 10 May Sully RDO ... Late: 29 May Meade JLB; 26 May Brown GO; 25 May Day BJU; 25 May Clark BJU; 20 May Brule RSL

**American Golden-Plover** Early: **31 Mar Deuel BJU**; **31 Mar Lake JSP**; 12 Apr Clark BJU; 12 Apr Sully BJU ... Late: 29 May Brookings BJU; 28 May Hyde JT; 23 May Edmunds GO

**Semipalmated Plover** Early: **07 Apr Charles Mix RM**; 13 Apr Clay DS, JSP; 13 Apr Hutchinson JLB; 13 Apr Miner JLB; 21 Apr Harding ND ... Late: 30 May Grant BJU; 29 May Brookings BJU; 25 May Day BJU; 25 May Clark BJU; 19 May Charles Mix RM, RSL; 17 May Pennington JLB

**Piping Plover** Early: **14 Apr Sully RSL**; 15 Apr Hughes KM; 17 Apr Hand DB; 01 May Pennington BJU

**Killdeer** Early: 06 Mar Clay GJS; 08 Mar Yankton RND; 09 Mar Tripp SS; 10 Mar Brookings JT; 10 Mar Lake JSP

**Black-necked Stilt** Early: **29 Apr Beadle RDO**; 15 May Brown GO, RDO; 17 May Edmunds JDW

**American Avocet** Early: **25 Mar Brule SS**; **03 Apr Brown GO**; 07 Apr Kingsbury ND; 07 Apr Lake JSP; 08 Apr Meade JLB

**Spotted Sandpiper** Early: **10 Apr Meade EEM**; **15 Apr Stanley KM**; 25 Apr Charles Mix RM; 25 Apr Day GO; 27 Apr Fall River BJU

**Solitary Sandpiper** Early: **13 Apr Sully BJU**; **15 Apr Hughes RDO**; 21 Apr Union DS; 23 Apr Pennington JLB; 28 Apr Brookings JT ... Late: 26 May Brown GO; 25 May Codington BJU; 22 May Day GO, BJU; 18 May Walworth BJU; 18 May Potter BJU; 14 May Butte BJU

**Greater Yellowlegs** Early: **10 Mar Clay DS**; 16 Mar Dewey BJU; 16 Mar Walworth BJU; 17 Mar Lake JSP; 24 Mar Bennett ND ... Late: 31 May Meade RSL; 26 May Brown GO; 24 May Codington BJU; 19 May Charles Mix RM

**Willet** Early: **01 Apr Harding CEM**; 13 Apr Day JLB; 13 Apr Miner JLB; 13 Apr Sully BJU

**Lesser Yellowlegs** Early: **11 Mar Clay DS**; **13 Mar Charles Mix RM**; **15 Mar Potter BJU**; 17 Mar Hutchinson KP; 27 Mar Meade JLB ... Late: 31 May Meade RSL; 30 May Turner KP; 29 May Brookings BJU; 28 May Walworth MO

**Upland Sandpiper** Early: **21 Mar Brookings JT**; **18 Apr Kingsbury SS**; 23 Apr Fall River BJU; 28 Apr Brule JSP

**Whimbrel** All Reports: 13 May Butte BJU; 22 May Day BJU

**Long-billed Curlew** Early: **28 Mar Jackson *vide* DB**; 06 Apr Meade RSL; 07 Apr Brule RDO; 07 Apr Stanley ND

**Hudsonian Godwit** Early: **09 Apr Hutchinson KP**; **10 Apr Hughes RDO**; 11 Apr Charles Mix KP ... Late: 28 May Clark BJU; 26 May Brown GO; 25 May Day BJU; 25 May Clark BJU; 18 May Walworth BJU; 18 May Potter BJU

**Marbled Godwit** Early: **03 Apr Hand DB**; 09 Apr Hughes RDO; 09 Apr Marshall GO; 13 Apr Haakon BJU; 13 Apr Meade BJU

**Ruddy Turnstone** Early: **02 May Hand BJU**; 08 May Spink BJU; 09 May Clay DS ... Late: 30 May Turner KP; 30 May Kingsbury BJU; 28 May Hamlin BJU; 18 May Walworth BJU; 18 May Potter BJU

**Sanderling** Early: 26 Apr Edmunds GO; 01 May Pennington BJU; 05 May Brown GO; 08 May Potter BJU ... Late: 30 May Kingsbury BJU; 28 May Hamlin BJU; 26 May Stanley DB; 14 May Butte BJU

**Semipalmated Sandpiper** Early: 10 Apr Charles Mix RM; 12 Apr Deuel BJU; 12 Apr Sully BJU; 29 Apr Fall River BJU ... Late: 31 May Bennett RM; 30 May Hamlin BJU; 30 May Grant BJU; 28 May Walworth MO; 28 May Stanley RDO

**Least Sandpiper** Early: **24 Mar Lake JSP**; **31 Mar Brookings JT**; **31 Mar Hughes RDO**; 25 Apr Meade RSL ... Late: 30 May Hamlin BJU; 29 May Brookings BJU; 28 May Walworth MO; 26 May Meade RSL; 26 May Butte JLB

**White-rumped Sandpiper** Early: **17 Apr Charles Mix RM**; 01 May Hughes BJU; 02 May Beadle BJU; 02 May Brown GO; 02 May Kingsbury BJU; 09 May Perkins BJU

**Baird's Sandpiper** Early: **10 Mar Clay DS**; 25 Mar Charles Mix KP, SS; 28 Mar Grant BJU; 13 Apr Haakon BJU; 13 Apr Meade BJU ... Late: 31 May Meade RSL; 30 May Turner KP; 30 May Perkins DS, JSP; 30 May Hamlin BJU; 30 May Butte MO; 26 May Charles Mix RM

**Pectoral Sandpiper** Early: **11 Mar Clay DS**; **19 Mar Minnehaha JL**; 24 Mar Lake JSP; 13 Apr Haakon BJU; 13 Apr Meade BJU ... Late: 31 May Meade RSL; 30 May Turner KP; 30 May Hamlin BJU; 28 May Walworth MO

**Dunlin** Early: **08 Apr Lake ND**; 12 Apr Sully BJU, JLB, RDO; 13 Apr Hutchinson JLB ... Late: 30 May Hamlin BJU; 30 May Grant BJU; 29 May Brookings BJU; 19 May Charles Mix RM, KP

**Stilt Sandpiper** Early: **20 Apr Sully KM**; 25 Apr Charles Mix RM; 29 Apr Fall River BJU; 02 May Beadle BJU; 02 May Hand BJU; 02 May Kingsbury BJU ... Late: 30 May Grant BJU; 30 May Dewey DS, JSP; 29 May Meade JLB; 29 May Hyde JT

**Buff-breasted Sandpiper** All Reports: 19 May Kingsbury JSP; **28 May Clark BJU**

**Short-billed Dowitcher** Early: **14 Apr Sully RDO, RSL**; 29 Apr Charles Mix RM; 29 Apr Fall River BJU; 02 May Beadle BJU; 02 May Hand BJU; 02 May Kingsbury BJU; 02 May Lake BJU; 02 May Miner BJU ... Late: 30 May Grant BJU; 29 May Brookings BJU; 25 May Day BJU; 25 May Clark BJU; 18 May Walworth BJU; 18 May Potter BJU; 17 May Butte BJU

**Long-billed Dowitcher** Early: 06 Apr Bennett RSL; 08 Apr Hanson ND; 09 Apr Hutchinson KP; 09 Apr Marshall GO; 11 Apr Bon Homme RM; 11 Apr Charles Mix KP; 11 Apr Hughes RDO ... Late: **27 May Meade JLB**; 22 May Day BJU; 19 May Charles Mix RM

**Wilson's Snipe** Early: 10 Mar Clay DS; 15 Mar Hughes BJU; 24 Mar Bennett ND; 24 Mar Lake JSP

**American Woodcock** All Reports: 16 Mar Walworth BJU; 24 Mar Lincoln SS; 21 May Day BJU  
**Wilson's Phalarope** Early: 13 Apr Hughes KM; 14 Apr Sully RDO, RSL; 17 Apr Charles Mix RM; 18 Apr Kingsbury SS; 20 Apr Meade EEM

**Red-necked Phalarope** Early: **01 May Hughes BJU**; 09 May Perkins BJU; 10 May Sully RDO; 18 May Edmunds BJU ... Late: 31 May Meade RSL; 30 May Grant BJU; 28 May Walworth MO

**Bonaparte's Gull** Early: **14 Mar Faulk BJU**; **17 Mar Lake JSP**; 18 Mar Stanley KM, RDO; 13 Apr Meade BJU ... Late: 28 May Codington BJU; 20 May Charles Mix RSL; 18 May Potter BJU; 14 Apr Butte BJU

**Franklin's Gull** Early: 14 Mar Codington BJU; 15 Mar Hand DB; 15 Mar Sully BJU; 09 Apr Meade RSL

**Mew Gull** All Reports: **16 Mar Hughes RDO, SS**; 19 Mar Stanley RDO; 20 Mar Hughes RDO; 21 Mar Stanley RDO; 30 Mar Hughes KM

**Ring-billed Gull** Early: 01 Mar Hughes RDO; 02 Mar Stanley DB; 04 Mar Yankton RND; 06 Mar Lake JSP; 14 Mar Meade RSL

**California Gull** Early: 01 Mar Hughes RDO; 14 Mar Codington BJU; 14 Mar Faulk BJU; 24 Mar Butte JLB

**Herring Gull** Early: 01 Mar Charles Mix RM; 01 Mar Hughes RDO; 02 Mar Stanley DB; 10 Mar Lake JSP; 07 Apr Perkins ND ... Late: 30 May Kingsbury BJU; 28 May Walworth MO; 22 May Meade RSL

**Thayer's Gull** Late: **21 Apr Miner JSP**; **18 Apr Kingsbury DC**; **13 Apr Hughes BJU**

**Iceland Gull** All Reports: 02 Mar Stanley KM; 07 Mar Hughes RDO

**Lesser Black-backed Gull** All Reports: 08 Apr Stanley RDO; 13 Apr Stanley BJU

**Glaucous Gull** All Reports: 15 Mar Potter BJU; 16 Mar Walworth BJU; 21 Mar Hughes RDO; 29 Mar Stanley RDO; 12 Apr Clark BJU

**Least Tern** All Reports: 14 May Clay DS; 16 May Charles Mix RM; 18 May Dewey BJU; 19 May Charles Mix RM; 21 May Potter RDO; 22 May Charles Mix KP

**Caspian Tern** Early: **11 Apr Stanley RDO**; 23 Apr Fall River BJU; 26 Apr Hughes JLB; 05 May Grant BJU ... Late: 28 May Hamlin BJU; 24 May Clark BJU; 22 May Day BJU; 18 May Potter BJU; 18 May Dewey BJU; 27 Apr Fall River BJU

**Black Tern** Early: 01 May Pennington BJU; 09 May Charles Mix RM; 09 May Edmunds GO

**Common Tern** Early: **21 Apr Hughes RDO**; 27 Apr Fall River BJU; 01 May Stanley BJU; 02 May Kingsbury BJU

**Forster's Tern** Early: **09 Apr Brown GO**; **09 Apr Charles Mix RM**; **09 Apr Hughes RDO**; 27 Apr Fall River BJU

**Rock Pigeon** Confirmed Breeding: **01 Apr Fall River (CN) ND**

**Eurasian Collared-Dove** Confirmed Breeding: **10 Apr Lawrence (FL) SW**

**Mourning Dove** Early: 02 Mar Lake JSP; 12 Mar Brown GO; 12 Mar Clay GJS; 24 Mar Bennett ND

**Yellow-billed Cuckoo** Early: **12 May Brookings JT**; 22 May Day BJU; 23 May Hughes DB

**Black-billed Cuckoo** All Reports: 23 May Day BJU; 24 May Roberts MO; 25 May Codington BJU; 28 May Brookings BJU

**Barn Owl** Confirmed Breeding: **16 May Charles Mix (PY) fide RM** ... also reported 29 Apr Fall River BJU; 13 May Sully RDO; 19 May Charles Mix RSL

**Snowy Owl** Late: **07 May Deuel BJU**; **28 Apr Hand DB**; 18 Apr Edmunds GO; 14 Apr Butte BJU; 09 Apr Hughes RDO

**Burrowing Owl** Early: **15 Mar Potter BJU**; 29 Mar Hughes RDO; 01 Apr Pennington JLB; 28 May Hamlin BJU

**Barred Owl** All Reports: 24 Mar Lincoln SS; 25 Mar Union ND; 28 Apr Lincoln DS; 28 Apr Union JLB

**Northern Saw-whet Owl** Confirmed Breeding: 08 Apr Harding (ON) CEM ... Late: 23 Mar Todd ND; 16 Mar Walworth BJU; 03 Mar Sully KM

**Common Nighthawk** Early: 04 May Clay DS; 17 May Hughes KM; 18 May Brown BJU; 18 May Gregory ND; 25 May Pennington RSL

**Common Poorwill** Early: **23 Apr Custer BJU**; 29 Apr Fall River BJU; 09 May Harding BJU; 12 May Stanley RDO

**Chuck-will's-widow** All Reports: **03 May Yankton ND**; 17 May Yankton RDO

**Whip-poor-will** Early: **20 Apr Charles Mix RM**; 01 May Hughes BJU; 03 May Yankton ND

**Chimney Swift** Early: 29 Apr Fall River BJU; 30 Apr Hughes KM; 01 May Lake JSP; 01 May Pennington BJU

**White-throated Swift** Early: **01 Apr Fall River ND**; 14 Apr Lawrence BJU; 19 Apr Pennington BJU

**Ruby-throated Hummingbird** Early: **02 May Charles Mix RM**; 04 May Clay DS; 04 May Minnehaha DC

**Broad-tailed Hummingbird** Only Report: 30 May Custer MO

**Belted Kingfisher** Early: 05 Mar Pennington JLB; 10 Mar Hughes DB; 14 Mar Codington BJU; 14 Mar Faulk BJU

**Lewis's Woodpecker** All Reports: 18 Mar Lawrence ND; 17 Apr Lawrence BJU, ND; 20 Apr Pennington BJU; 30 May Custer MO

**Red-headed Woodpecker** Early: 21 Mar Gregory KP; 01 Apr Charles Mix RM; 12 Apr Stanley KM; 24 Apr Custer BJU; 29 Apr Hand DB



**Yellow-bellied Sapsucker** Early: 24 Mar Lincoln SS; 04 Apr Gregory RM; 13 Apr Stanley BJU; 13 Apr Sully BJU

**Red-naped Sapsucker** Early: 16 Apr Lawrence BJU; 19 Apr Pennington BJU; 21 Apr Custer BJU

**Downy Woodpecker** Confirmed Breeding: **21 May Minnehaha (CF) ND; 25 May Minnehaha (FY) MRZ**

**Hairy Woodpecker** Confirmed Breeding: **03 May Union (CF) ND**

**American Three-toed Woodpecker** All Reports: 10 Mar Lawrence RDO; 11 Mar Lawrence ND, RDO; 31 Mar Lawrence JLB; 17 Apr Lawrence BJU; 20 Apr Pennington BJU

**Black-backed Woodpecker** All Reports: 17 Apr Lawrence BJU; 19 Apr Pennington BJU; 20 Apr Pennington BJU; 05 May Pennington JLB, RSL

**Northern Flicker** Early: 01 Mar Pennington JLB; 02 Mar Stanley RDO; 05 Mar Custer KH; 10 Mar Roberts MO

**Pileated Woodpecker** All Reports: 07 Mar Grant BJU; 17 Mar Marshall BJU; 16 May Marshall GO; 24 May Marshall MO; 24 May Roberts MO

**Olive-sided Flycatcher** Early: **06 May Stanley KM**; 09 May Hughes DB; 13 May Brown JT; 13 May Spink JT; 17 May Lawrence BJU ... Late: 30 May Kingsbury BJU; 29 May Walworth DS, JSP; 29 May Brookings BJU

**Western Wood-Pewee** Early: 09 May Harding BJU; 23 May Custer RDO; 27 May Meade JLB

**Eastern Wood-Pewee** Early: **12 May Brookings JT; 12 May Union DS**; 16 May Marshall GO; 16 May Roberts GO, RDO

**Yellow-bellied Flycatcher** Early: 23 May Day BJU; 25 May Codington BJU; 26 May Brookings JT; 28 May Clay DS; 28 May Stanley RDO; 28 May Walworth MO ... Late: 29 May Stanley MO; 29 May Brookings BJU

**Alder Flycatcher** Early: 18 May Brown BJU; 19 May Lake JSP; 19 May Minnehaha RDO; 23 May Hughes DB ... Late: 30 May Kingsbury BJU; 30 May Hamlin BJU; 30 May Brookings BJU; 29 May Stanley MO

**Willow Flycatcher** Early: 12 May Brookings JT; 13 May Harding BJU; 18 May Brown BJU; 19 May Charles Mix KP, RSL, RM

**Least Flycatcher** Early: 01 May Hughes EDS; 02 May Hand BJU; 02 May Kingsbury BJU; 08 May Pennington RSL

**Dusky Flycatcher** All Reports: 23 May Custer RDO; 30 May Lawrence MO

**Cordilleran Flycatcher** All Reports: 28 May Pennington JLB; 30 May Custer MO; 30 May Lawrence DB; 31 May Fall River RM

**Eastern Phoebe** Early: **16 Mar Yankton RND; 19 Mar Minnehaha JL**; 21 Mar Clay DS; 31 Mar Pennington RSL

**Say's Phoebe** Early: 04 Apr Gregory RM; 14 Apr Butte BJU; 14 Apr Sully RDO; 22 May Day BJU

**Great Crested Flycatcher** Early: **04 May Lincoln DC**; 08 May Hughes DB; 09 May Brookings JSP; 09 May Clay DS; 28 May Pennington RSL

**Western Kingbird** Early: 29 Apr Brule RM; 30 Apr Hand DB; 01 May Haakon BJU

**Eastern Kingbird** Early: **27 Apr Fall River BJU; 01 May Haakon BJU**; 02 May Beadle BJU; 02 May Charles Mix KP, RM; 02 May Clay DS; 02 May Hand BJU; 02 May Kingsbury BJU

**Loggerhead Shrike** Early: 24 Mar Lake JSP; 25 Mar Gregory RM; 26 Mar Charles Mix RM; 01 Apr Fall River ND

**Northern Shrike** Late: 01 Apr Pennington JLB; 24 Mar Hand SS; 23 Mar Marshall GO; 16 Mar Walworth BJU; 16 Mar Corson BJU; 16 Mar Campbell BJU

**Bell's Vireo** Early: **10 May Clay DS**; 13 May Pennington JLB; 13 May Stanley KM; 19 May Lake JSP

**Yellow-throated Vireo** Early: **03 May Stanley KM; 04 May Lincoln DC**; 05 May Grant BJU

**Plumbeous Vireo** All Reports: **11 May Harding BJU**; 23 May Custer RDO; 30 May Custer MO

**Blue-headed Vireo** Early: 04 May Clay ND; 04 May Hand DB; 04 May Lincoln DC; 04 May Marshall MO ... Late: 19 May Minnehaha RDO; 12 May Walworth KM; 09 May Dewey BJU; 09 May Brookings JSP

**Warbling Vireo** Early: **28 Apr Gregory RM**; 29 Apr Charles Mix RM; 02 May Clay DS; 04 May Douglas KP; 04 May Lincoln DC; 04 May Marshall MO; 13 May Harding BJU; 13 May Pennington JLB

**Philadelphia Vireo** All Reports: **06 May Stanley JLB**; 09 May Walworth BJU; 11 May Minnehaha JSP; 19 May Minnehaha DC; 29 May Brookings BJU; 31 May Hand JT

**Red-eyed Vireo** Early: **03 May Clay DS, ND; 04 May Lincoln DC**; 09 May Brookings JSP; 15 May Pennington JLB

**Gray Jay** Confirmed Breeding: **19 Apr Pennington (ON) BJU**

**Pinyon Jay** All Reports: 28 Apr Fall River BJU; 29 Apr Fall River BJU; 30 Apr Fall River BJU; 14 May Butte ND; 30 May Custer MO

**Clark's Nutcracker** All Reports: 11 Mar Pennington ND, RDO; 17 Apr Lawrence BJU; 19 Apr Pennington BJU; 20 Apr Pennington BJU; 31 May Custer MO

**Black-billed Magpie** reported 16 Mar Campbell BJU; 08 May Potter BJU

**American Crow** Confirmed Breeding: **23 Mar Pennington (CN) ND**

**Purple Martin** Early: 06 Apr Lake JSP; 06 Apr Stanley RDO; 12 Apr Spink BJU; 27 Apr Fall River BJU

**Tree Swallow** Early: **20 Mar Yankton RND**; 26 Mar Hand DB; 27 Mar Beadle JLB; 07 Apr Perkins ND  
**Violet-green Swallow** Early: **16 Apr Pennington JLB**; 21 Apr Custer BJU; 23 Apr Fall River BJU  
**Northern Rough-winged Swallow** Early: **12 Apr Gregory RM**; 13 Apr Sully BJU; 19 Apr Edmunds GO; 27 Apr Fall River BJU; 27 Apr Pennington ND  
**Bank Swallow** Early: 27 Apr Fall River BJU; 27 Apr Pennington ND; 28 Apr Hand DB; 28 Apr Meade RSL; 30 Apr Hughes KM  
**Cliff Swallow** Early: 23 Apr Fall River BJU; 27 Apr Pennington ND; 28 Apr Gregory RM; 28 Apr Hand DB; 28 Apr Stanley RDO; 28 Apr Yankton JLB  
**Barn Swallow** Early: **04 Apr Hughes RDO**; **07 Apr Charles Mix RM**; **08 Apr Hanson ND**; 21 Apr Custer BJU; 21 Apr Pennington RSL  
**Black-capped Chickadee** Confirmed Breeding: **16 Apr Lawrence (CN) BJU**; **19 Apr Pennington (ON) BJU**; **23 Apr Pennington (CN) JLB**  
**Red-breasted Nuthatch** Late: 13 Apr Stanley BJU; 10 Apr Brown GO; 31 Mar Lake JSP; 31 Mar Hughes KM  
**Brown Creeper** Late: 13 Apr Stanley BJU; 03 Apr Marshall GO; 31 Mar Brookings JT  
**Rock Wren** Early: 21 Apr Custer BJU; 23 Apr Fall River BJU; 01 May Pennington BJU  
**Canyon Wren** Confirmed Breeding: **01 Apr Fall River (NB) ND**  
**House Wren** Early: 25 Apr Clay GJS; 25 Apr Stanley RDO; 28 Apr Brookings JT; 28 Apr Charles Mix JLB, KP; 28 Apr Hand DB; 28 Apr Hughes EDS; 28 Apr Union JLB; 29 Apr Fall River BJU  
**Winter Wren** All Reports: 10 Mar Meade EEM; 25 Mar Union SS; 26 Mar Union ND; 12 Apr Codington BJU; 22 Apr Charles Mix RM  
**Sedge Wren** Early: **26 Apr Brookings JT**; 02 May Beadle BJU; 02 May Hand BJU; 02 May Kingsbury BJU; 08 May Potter BJU; 08 May Walworth BJU  
**Marsh Wren** Early: 29 Mar Butte JLB; 12 Apr Stanley KM; 28 Apr Hughes RDO; 02 May Beadle BJU; 02 May Hand BJU; 02 May Kingsbury BJU  
**American Dipper** Confirmed Breeding: **23 Mar Lawrence (NB) ND**  
**Golden-crowned Kinglet** Late: 13 Apr Stanley BJU; 12 Apr Codington BJU; 12 Apr Clark BJU  
**Ruby-crowned Kinglet** Early: 28 Mar Grant BJU; 31 Mar Brookings JT; 31 Mar Lake JSP; 03 Apr Stanley RDO; 11 Apr Pennington JLB ... Late: 12 May Walworth KM; 11 May Lake JSP; 09 May Edmunds GO; 09 May Dewey BJU  
**Blue-gray Gnatcatcher** Early: **23 Apr Fall River BJU**; 28 Apr Lincoln DS; 12 May Union DS  
**Eastern Bluebird** Early: 06 Mar Charles Mix RM; 06 Mar Lake JSP; 08 Mar Yankton RND; 09 Mar Mellette SS  
**Mountain Bluebird** Early: 06 Mar Custer ND; 09 Mar Gregory SS; 10 Mar Stanley KM  
**Townsend's Solitaire** Late: 11 Apr Hughes ND; 29 Mar Hamlin CN; 29 Mar Edmunds GO  
**Veery** Early: **04 May Lincoln DC**; 07 May Stanley RDO; 17 May Lawrence BJU  
**Gray-cheeked Thrush** Early: 02 May Hand BJU; 04 May Lincoln DC; 06 May Clay DS; 06 May Stanley KM; 12 May Harding CEM ... Late: 28 May Stanley RDO; 21 May Hughes EDS; 20 May Brookings GO; 17 May Lawrence BJU  
**Swainson's Thrush** Early: **21 Apr Stanley RDO**; 28 Apr Brookings JT; 28 Apr Hughes KM; 07 May Pennington JLB  
**Hermit Thrush** Early: **28 Mar Grant BJU**; 31 Mar Hughes KM, RDO; 31 Mar Lake JSP; 14 Apr Butte BJU ... Late: **30 May Lawrence MO**; 28 Apr Brookings JT; 23 Apr Fall River BJU; 13 Apr Stanley BJU  
**Wood Thrush** Early: 01 May Union GJS; 04 May Clay ND; 04 May Douglas KP; 04 May Lincoln DC  
**Varied Thrush** Only Report: 16 Apr Lawrence BJU  
**Gray Catbird** Early: 28 Apr Gregory RM; 02 May Hand BJU; 02 May Kingsbury BJU; 13 May Pennington JLB  
**Northern Mockingbird** All Reports: 23 Apr Fall River BJU; 29 Apr Hand DB, RDO; 08 May Clark BJU; 24 May Gregory RM  
**Sage Thrasher** All Reports: **23 Apr Fall River BJU**; 31 May Fall River MO  
**Brown Thrasher** Early: 31 Mar Hughes KM; 13 Apr Sully BJU; 18 Apr Clay DS; 21 Apr Lake JT; 23 Apr Fall River BJU  
**European Starling** Confirmed Breeding: **10 Apr Clark (CN) ND**; **17 Apr Lawrence (CN) ND**; **18 Apr Fall River (CN) ND**  
**American Pipit** Early: **10 Mar Charles Mix KP**; **14 Mar Douglas KP**; 26 Mar Stanley RDO; 13 Apr Haakon BJU; 13 Apr Meade BJU ... Late: 18 May Walworth BJU; 14 May Butte BJU; 11 May Harding BJU; 05 May Grant BJU; 05 May Deuel BJU  
**Sprague's Pipit** All Reports: 08 May Harding ND; 11 May Perkins BJU; 12 May Walworth KM  
**Bohemian Waxwing** Only Report: 16 Mar Walworth BJU  
**Cedar Waxwing** Confirmed Breeding: **23 May Day (CN) ND**  
**Ovenbird** Early: **29 Apr Hughes KM**; 04 May Lincoln DC; 04 May Marshall MO; 09 May Harding ND  
**Northern Waterthrush** Early: **28 Apr Brookings JT**; 29 Apr Stanley KM; 01 May Pennington BJU ... Late: 25 May Codington BJU; 23 May Day BJU; 20 May Charles Mix RM; 17 May Lawrence BJU  
**Golden-winged Warbler** All Reports: **04 May Lincoln DC**; 09 May Walworth BJU; 10 May Lake JSP; 19 May Charles Mix RM; 20 May Charles Mix RM; 23 May Day BJU

**Blue-winged Warbler** All Reports: **04 May Lincoln DC**; 18 May Lincoln RDO; 19 May Lincoln RDO; 21 May Lincoln DC

**Black-and-white Warbler** Early: 27 Apr Brookings KCJ; JT; 27 Apr Fall River BJU; 28 Apr Lincoln DS; 05 May Stanley RDO ... Late: 22 May Day GO; 17 May Lawrence BJU; 16 May Roberts GO; 12 May Walworth KM

**Prothonotary Warbler** All Reports: 29 May Brookings BJU; 30 May Brookings BJU

**Tennessee Warbler** Early: **02 May Hand BJU**; **02 May Kingsbury BJU**; **04 May Clay DS, ND**; **04 May Lincoln DC**; **04 May Marshall MO**; 09 May Harding BJU

**Orange-crowned Warbler** Early: 18 Apr Hand DB; 19 Apr Stanley KM; 20 Apr Brookings JT; 21 Apr Meade ND ... Late: 31 May Fall River RM; 19 May Charles Mix RM; 14 May Marshall GO; 14 May Butte BJU

**Nashville Warbler** Early: 02 May Hand BJU; 04 May Lincoln DC; 05 May Brown GO; 05 May Deuel BJU; 05 May Grant BJU; 08 May Potter BJU ... Late: 18 May Brown BJU; 14 May Marshall GO; 09 May Walworth BJU; 09 May Edmunds GO; 09 May Dewey BJU

**Virginia's Warbler** All Reports: 23 May Custer RDO; 30 May Custer MO

**Connecticut Warbler** All Reports: **18 May Brown BJU**; 25 May Day BJU

**MacGillivray's Warbler** All Reports: 17 May Lawrence BJU; 23 May Custer RDO; 30 May Lawrence MO

**Mourning Warbler** Early: **04 May Lincoln DC**; 18 May Brown BJU; 18 May Stanley KM ... Late: 29 May Brookings BJU; 28 May Hamlin BJU; 25 May Day BJU; 25 May Codington BJU; 19 May Union KM

**Kentucky Warbler** All Reports: 19 May Lincoln KM, RDO; 21 May Lincoln DC

**Common Yellowthroat** Early: 28 Apr Charles Mix JLB, KP; 28 Apr Stanley RDO; 30 Apr Pennington JLB; 02 May Beadle BJU; 02 May Hand BJU; 02 May Kingsbury BJU

**Hooded Warbler** Only Report: **30 May Day BJU**

**American Redstart** Early: **04 May Lincoln DC**; **05 May Charles Mix ND**; **05 May Clay DS**; **05 May Deuel BJU**; **05 May Douglas KP**; **05 May Grant BJU**; **05 May Lake JSP**; 13 May Harding BJU

**Cape May Warbler** All Reports: **08 May Potter BJU**; 09 May Brookings JSP; 25 May Codington BJU; **28 May Hamlin BJU**

**Northern Parula** Early: **01 May Minnehaha DC**; 02 May Hand BJU; 05 May Charles Mix ND ... Late: 23 May Day BJU; 20 May Minnehaha RDO; 09 May Walworth BJU

**Magnolia Warbler** Early: **02 May Hand BJU**; **05 May Brown GO**; **05 May Stanley KM, RDO** ... Late: 22 May Day BJU; 21 May Hughes EDS; 19 May Brown GO

**Bay-breasted Warbler** All Reports: **09 May Walworth BJU**; 19 May Charles Mix KP; 20 May Minnehaha RDO

**Blackburnian Warbler** Early: **08 May Faulk BJU**; 12 May Minnehaha DC; 13 May Lake JSP; 24 May Union DS ... Late: 29 May Brookings BJU; 25 May Codington BJU; 23 May Day BJU

**Yellow Warbler** Early: 02 May Charles Mix KP; 03 May Clay DS; 03 May Hughes EDS; 03 May Pennington JLB; 04 May Marshall MO; 04 May Minnehaha DC

**Chestnut-sided Warbler** Early: **04 May Minnehaha DC**; 06 May Lake JSP; 25 May Day BJU ... Late: 28 May Brookings BJU

**Blackpoll Warbler** Early: 02 May Charles Mix RM; 04 May Marshall MO; 05 May Brown GO; 05 May Deuel BJU; 05 May Grant BJU; 05 May Stanley KM, RDO; 13 May Harding BJU ... Late: 31 May Hand JT; 31 May Edmunds GO; 29 May Brookings BJU; 26 May Charles Mix RM

**Palm Warbler** Early: **23 Apr Fall River BJU**; **24 Apr Custer BJU**; 27 Apr Brookings JT; 27 Apr Stanley KM ... Late: 16 May Lawrence BJU; 14 May Butte BJU; 13 May Harding BJU; 12 May Walworth KM; 12 May Miner JSP; 12 May Brookings JT

**Pine Warbler** All Reports: **05 May Grant BJU**; **11 May Stanley RDO**

**Yellow-rumped Warbler** Early: 17 Mar Brown BJU; 03 Apr Hand DB; 07 Apr Pennington KM; 10 Apr Hughes EDS ... Late: 28 May Kingsbury BJU; 19 May Charles Mix RM; 18 May Hughes EDS

**Black-throated Green Warbler** All Reports: 05 May Deuel BJU; 09 May Brookings JSP; 23 May Day BJU

**Canada Warbler** All Reports: **09 May Dewey BJU**; 23 May Day BJU; 25 May Codington BJU; 29 May Brookings BJU

**Wilson's Warbler** Early: 04 May Lake JSP; 05 May Deuel BJU; 05 May Grant BJU; 05 May Stanley RDO; 07 May Pennington JLB ... Late: 28 May Brookings BJU; 25 May Day BJU; 24 May Codington BJU; 18 May Potter BJU; 17 May Lawrence BJU; 17 May Butte BJU

**Yellow-breasted Chat** Early: **08 May Faulk BJU**; 09 May Harding ND; 13 May Pennington JLB; 13 May Stanley KM

**Summer Tanager** Early: 05 May Stanley KM, RDO; 13 May Brookings JT; 17 May Hughes EDS ... Late: **28 May Clay DS**; 23 May Union DS; 06 May Stanley KM, JLB

**Scarlet Tanager** Early: 05 May Deuel BJU; 09 May Walworth BJU; 12 May Union DS

**Western Tanager** Early: 11 May Harding BJU, CEM; 23 May Custer RDO; 31 May Fall River RM

**Spotted Towhee** Early: 08 Apr Clay GJS; 12 Apr Stanley KM; 14 Apr Charles Mix RM; 14 Apr Gregory JLB; 18 Apr Custer ND; 25 Apr Day GO; 25 Apr Douglas KP

**Eastern Towhee** Early: 22 Apr Stanley RDO; 01 May Union GJS; 02 May Gregory KP; 19 May Lincoln KM

**American Tree Sparrow** Late: 18 Apr Minnehaha DC; 17 Apr Charles Mix RM; 31 Mar Deuel BJU; 24 Mar Butte JLB

**Chipping Sparrow** Early: 18 Mar Hughes EDS; 31 Mar Charles Mix RM; 31 Mar Deuel BJU; 09 Apr Pennington RSL

**Clay-colored Sparrow** Early: 26 Apr Stanley RDO; 27 Apr Fall River BJU; 28 Apr Charles Mix JLB, KP; 28 Apr Gregory RM

**Brewer's Sparrow** Early: **23 Apr Fall River BJU**; 12 May Harding BJU, CEM; 13 May Pennington JLB

**Field Sparrow** Early: **24 Mar Yankton RND**; 06 Apr Lake JSP; 14 Apr Gregory JLB, RM; 23 Apr Fall River BJU

**Vesper Sparrow** Early: **31 Mar Deuel BJU**; 01 Apr Hughes KM; 02 Apr Hand DB; 06 Apr Bennett JLB

**Lark Sparrow** Early: 21 Apr Custer BJU; 22 Apr Brookings JT; 22 Apr Charles Mix RM

**Lark Bunting** Early: **23 Apr Fall River BJU**; **24 Apr Custer BJU**; 30 Apr Harding CEM; 09 May Corson BJU; 09 May Dewey BJU

**Savannah Sparrow** Early: 28 Mar Hand DB; 31 Mar Charles Mix KP; 31 Mar Deuel BJU; 13 Apr Meade BJU

**Grasshopper Sparrow** Early: **22 Apr Charles Mix KP, RM**; **23 Apr Fall River BJU**; 01 May Haakon BJU; 01 May Hughes BJU; 01 May Meade BJU; 01 May Pennington BJU; 01 May Stanley BJU; 02 May Hand BJU

**Baird's Sparrow** All Reports: 11 May Harding ND; 11 May Perkins BJU; 12 May Harding BJU; 30 May Perkins DS, JSP

**Henslow's Sparrow** All Reports: **29 May Brookings BJU**; **31 May Lyman RDO**

**Le Conte's Sparrow** All Reports: **12 Apr Deuel BJU**; 28 Apr Gregory RM; 18 May Brown BJU; 22 May Marshall MO; 24 May Roberts MO; 25 May Brown RDO

**Nelson's Sparrow** All Reports: **08 May Walworth BJU**; **18 May Walworth BJU**; 21 May Brown MO; 26 May Brown GO

**Fox Sparrow** Early: 14 Mar Faulk BJU; 15 Mar Hyde BJU; 16 Mar Walworth BJU; 14 Apr Butte BJU ... Late: 23 Apr Fall River BJU; 20 Apr Pennington BJU; 15 Apr Charles Mix RM; 12 Apr Codrington BJU

**Song Sparrow** Early: 03 Mar Grant BJU; 05 Mar Pennington JLB; 08 Mar Yankton RND

**Lincoln's Sparrow** Early: 04 Apr Clay GJS; 19 Apr Stanley KM; 21 Apr Lake JT; 23 Apr Fall River BJU; 23 Apr Perkins ND ... Late: 16 May Lawrence BJU; 16 May Butte BJU; 13 May Pennington JLB; 12 May Walworth KM; 11 May Minnehaha JSP; 11 May Lake JSP

**Swamp Sparrow** Early: 19 Mar Minnehaha JL; 20 Mar Yankton RND; 12 Apr Clark BJU; 12 Apr Hughes KM

**White-throated Sparrow** Early: 15 Apr Clay GJS; 15 Apr Stanley RDO; 18 Apr Lake JSP; 21 Apr Custer BJU ... Late: 16 May Butte BJU; 12 May Walworth KM; 12 May Lincoln DC

**Harris's Sparrow** Early: 09 Mar Lake JSP; 17 Mar Clay GJS; 17 Mar Turner KP; 23 Apr Fall River BJU ... Late: 22 May Day BJU; 16 May Lawrence BJU; 16 May Butte BJU; 12 May Walworth KM

**White-crowned Sparrow** Early: 11 Mar Clay GJS; 18 Apr Butte ND; 18 Apr Lake JSP ... Late: **29 May Brookings BJU**; 19 May Charles Mix RM; 18 May Stanley KM; 18 May Potter BJU; 17 May Lawrence BJU

**Dark-eyed Junco** Late: 29 Apr Hughes EDS; 28 Apr Lincoln DS; 27 Apr Brookings KCJ

**Lapland Longspur** Late: 14 Apr Butte BJU; 06 Apr Potter GO; 31 Mar Deuel BJU

**Smith's Longspur** Only Report: **12 Apr Deuel BJU**

**Chestnut-collared Longspur** Early: **15 Mar Sully BJU**; 25 Mar Hand DB; 27 Mar Beadle JLB, RDO; 29 Mar Fall River ND

**Snow Bunting** Late: 16 Mar Walworth BJU; 16 Mar Dewey BJU; 16 Mar Corson BJU; 16 Mar Campbell BJU; 10 Mar Roberts MO

**Rose-breasted Grosbeak** Early: 01 May Union GJS; 03 May Clay DS, ND; 04 May Lincoln DC; 04 May Marshall MO; 13 May Harding BJU

**Black-headed Grosbeak** Early: 05 May Stanley KM; 08 May Hughes DB; 10 May Harding BJU; 19 May Lincoln KM

**Blue Grosbeak** All Reports: **30 Apr Custer BJU**; 10 May Gregory RM; 24 May Gregory RM; 28 May Pennington JLB; 29 May Brookings BJU; 29 May Stanley MO

**Lazuli Bunting** Early: 09 May Dewey BJU; 12 May Stanley RDO; 13 May Harding BJU, ND; 13 May Pennington JLB; 19 May Lake JSP

**Indigo Bunting** Early: **26 Apr Brookings KCJ, JT**; 02 May Kingsbury BJU; 05 May Clay DS; 14 May Butte BJU

**Dickcissel** Early: **04 May Clay ND**; **08 May Charles Mix RM**; 10 May Gregory RM; 12 May Lincoln DC

**Bobolink** Early: 04 May Marshall MO; 04 May Yankton DC; 05 May Charles Mix ND; 05 May Deuel BJU; 05 May Grant BJU; 09 May Perkins BJU  
**Red-winged Blackbird** Early: 01 Mar Jones DB; 02 Mar Charles Mix RM; 03 Mar Grant BJU  
**Eastern Meadowlark** All Reports: **24 Mar Bennett ND**; 06 Apr Bennett JLB; 22 May Bennett RDO; 31 May Bennett RM  
**Western Meadowlark** Early: 01 Mar Jones DB; 01 Mar Pennington JLB; 01 Mar Sully RDO; 06 Mar Lake JSP  
**Yellow-headed Blackbird** Early: 05 Mar Brown GO; 15 Mar Sully BJU; 21 Mar Meade EEM; 28 Mar Grant BJU  
**Rusty Blackbird** Early: 03 Mar Codington BJU; 03 Mar Jones RDO; 05 Mar Clay GJS ... Late: 23 Apr Fall River BJU; 21 Apr Kingsbury JSP; 20 Apr Pennington BJU; 20 Apr Brown MO; 16 Mar Walworth BJU; 16 Mar Dewey BJU; 16 Mar Corson BJU; 16 Mar Campbell BJU  
**Brewer's Blackbird** Early: 03 Mar Jones RDO; 12 Mar Meade EEM; 15 Mar Hyde BJU; 19 Mar Minnehaha JL  
**Common Grackle** Early: 02 Mar Charles Mix RM; 09 Mar Lake JSP; 10 Mar Brookings JT; 10 Mar Brown GO; 12 Mar Meade EEM  
**Great-tailed Grackle** Early: 18 Mar Moody JSP; 23 Mar Brown GO; 28 Mar Grant BJU; 12 Apr Sully JLB  
**Brown-headed Cowbird** Early: 01 Mar Jones DB; 15 Mar Hughes BJU; 15 Mar Sully BJU; 17 Mar McPherson BJU; 17 Mar Turner KP  
**Orchard Oriole** Early: **03 May Clay DS, GJS, ND**; 07 May Douglas KP; 09 May Brookings JSP; 09 May Charles Mix KP; 09 May Walworth BJU; 11 May Harding BJU  
**Bullock's Oriole** Early: 17 May Lawrence BJU; 23 May Fall River RDO; 25 May Pennington RSL  
**Baltimore Oriole** Early: **28 Apr Clay GJS**; 03 May Lake JSP; 03 May Stanley KM; 13 May Harding BJU; 13 May Pennington JLB  
**Gray-crowned Rosy Finch** All Reports: 05 Mar Custer KH; 10 Mar Custer KH; 13 Mar Custer KH; 14 Mar Custer KH; **16 Apr Lawrence BJU**  
**Pine Grosbeak** Only Report: 16 Mar Walworth BJU  
**Purple Finch** Late: 22 Apr Brown GO; 04 Apr Stanley ND; 27 Mar Hand DB  
**Cassin's Finch** All Reports: 16 Apr Lawrence BJU; 19 Apr Pennington BJU; 20 Apr Pennington BJU; 29 Apr Fall River BJU  
**House Finch** Confirmed Breeding: **23 Mar Charles Mix (CN) RM; 01 Apr Fall River (NB) ND**  
**Red Crossbill** Late: 10 Apr Douglas KP  
**White-winged Crossbill** All Reports: 16 Mar Walworth BJU; 31 Mar Lake JSP; 18 Apr Pennington BJU; 19 Apr Pennington BJU; 20 Apr Pennington BJU; 16 May Lawrence BJU  
**Common Redpoll** Late: 16 Mar Walworth BJU; 15 Mar Sully BJU; 15 Mar Potter BJU; 15 Mar Clay GJS; 10 Mar Custer KH; 03 Mar Codington BJU  
**Pine Siskin** Late: 13 May Lake JSP; 12 May Walworth KM; 10 May Edmunds GO  
**Lesser Goldfinch** Only Report: **29 Apr Fall River BJU**  
**Evening Grosbeak** All Reports: 23 Mar Lawrence ND; 16 Apr Lawrence BJU  
**House Sparrow** Confirmed Breeding: **18 Apr Pennington (CN) ND**

### Reports Requiring Acceptance By The Rare Bird Records Committee

**Ross's Goose** 28 May Clark BJU  
**Cackling Goose** 11 May Perkins BJU  
**Harlequin Duck** 01 Mar – 07 Apr Pennington JLB, KM  
**Neotropic Cormorant** 27 – 29 Apr Brule JLB, KP, RDO, RM; 18 May Brown BJU  
**Black Vulture** 21 Apr Custer BJU  
**Ferruginous Hawk** 19 Mar McCook JL  
**Red Knot** 29 Apr Fall River BJU  
**White-rumped Sandpiper** 08 Apr Hanson ND  
**Ruff** 12 - 14 Apr Sully BJU, JLB, RDO, RSL  
**Short-billed Dowitcher** 08 Apr Hanson ND  
**Laughing Gull** 02 - 07 Apr Stanley and Hughes RDO  
**Glaucous-winged Gull** 18 Apr – 02 May Kingsbury and Miner DC, RDO, SS, BJU  
**Arctic Tern** 18 May Dewey BJU  
**White-winged Dove** 31 Mar – 02 Apr Stanley KM, RDO  
**Yellow-bellied Sapsucker** 24 Apr Fall River BJU  
**White-eyed Vireo** 19 – 21 May Minnehaha DC, RDO  
**Blue-headed Vireo** 16 May Lawrence BJU  
**Pacific Wren** 17 Apr Lawrence BJU; 20 Apr Pennington BJU  
**Sage Thrasher** 16 – 17 Apr Hand DB, RDO, SS  
**Bohemian Waxwing** 16 Apr Lawrence BJU; 28 Apr Charles Mix RM  
**Nelson's Sparrow** 05 May Grant BJU  
**Lincoln's Sparrow** 17 Mar Lake JSP  
**McCown's Longspur** 13 May Butte BJU

**Eastern Meadowlark** 26 Apr Brookings KCJ  
**Pine Grosbeak** 20 Apr Pennington BJU  
**Lesser Goldfinch** 23 Apr Fall River BJU

**Species Expected But Not Reported**

Surf Scoter, White-winged Scoter, Barrow's Goldeneye, Yellow-crowned Night-Heron, Common Gallinule, Cassin's Kingbird, Worm-eating Warbler, Black-throated Blue Warbler

**Contributing Observers**

CA	Chris Anderson	CN	Colleen Nelson
DB	Doug Backlund	GO	Gary Olson
JLB	Jocelyn L. Baker	RDO	Ricky D. Olson
APB	Addison & Patricia Ball	MO	Mark Otnes
DC	Doug Chapman	JSP	Jeffrey S. Palmer
RND	Roger N. Dietrich	KP	Kelly Preheim
ND	Nancy Drilling	MS	Mark Schmidtbauer
KH	Kevin & Kris Hachmeister	GJS	Gary & Jan Small
BFH	Bill Huser	SS	Scott A. Stolz
KCJ	Kent C. Jensen	EDS	Eileen Dowd Stukel
EK	Elizabeth Krueger	DS	David Swanson
RSL	Richard S. Latuchie	JT	Jason Thiele
JL	Jon Little	BJU	Bill J. Unzen
RM	Ron Mabie	SW	Scott Weins
CEM	Charlie Miller	JDW	J. David Williams
EEM	Ernest E. Miller	MRZ	Mick Zerr
KM	Kenny Miller		

---

---

**SDOU SCHOLARSHIPS AND AWARDS COMMITTEE REPORT – 2012**

The Kenneth H. Husmann Memorial Scholarship, first awarded in 1989, is awarded annually to a student attending a South Dakota college or university. Faculty members nominate a deserving graduate student who is majoring in ornithology, ecology or wildlife management. Ming Liu, a PhD student in the laboratory of Dr. David Swanson at the University of South Dakota, is this year's winner of the \$500 scholarship. Mr. Liu's dissertation project uses both physiological and ecological methods to address questions of relative habitat quality and patterns of habitat use in two different habitats during spring and fall migrations.

2011-2012 marked the first year the Mary E. Baylor Memorial Scholarship was awarded. The scholarship is awarded to a South Dakota university or college undergraduate student who is in his/her junior or senior year, and is a biology major with a particular interest in ornithology, ecology, wildlife management, biological education or medicine. The recipient of this year's \$1,200 scholarship is Caity Reiland-Smith, a student at Augustana College in Sioux Falls. Nominated by Dr. Carrie L. Hall of the Biology Department, Ms Reiland-Smith is working towards a Bachelor of Arts in Biological Sciences with an emphasis in avian behavioral ecology.

The Alfred Hinds Memorial Award for Ornithology, established in 1983, is presented to a deserving individual, student, or an organization/agency which has made a significant contribution to the advancement of ornithology in South Dakota. It may be used to fund a special SDOU project which needs financial support. The \$100 award winner in 2012 is Amber Stout, a third grade teacher at Jefferson Elementary School in Pierre. Ms. Stout teaches a bird unit each year in which the class incubates eggs in the classroom, makes bird nests from natural nesting materials, visits a banding station, and participates in a birding walk in a local park.

Scholarships and Awards Committee: Jocelyn Lee Baker (Chair), Nelda Holden and Galen Steffen.

# SDOU SPRING 2012 MEETING

## OBSERVATIONS ON EDGEMONT

by Mick Zerr

The spring meeting of the SDOU at Edgemont can be classified only one way: very successful!

Spring meetings of the SDOU offer a number of options for birders. Of course, the observation and appreciation of birds of the region is major. (For many of us, who do not have all of the area birds on our life lists, the meetings offer a great opportunity to witness wonderful birds for the first time.) Informative and interesting speakers add more to the adventure, and the camaraderie of fellow birders is always something to look forward to.



*On the Sunrise Guest Ranch near Edgemont, SD.*

*Photo: Mark Hollenbeck*

Cassens and Hollenbeck ranches and numerous side trips gave us an interesting mix of local habitats to explore. Each area had its unique birds, such as the Sage Thrasher (rare in SD), the elusive Long-billed Curlew, the splendid Bullock's Oriole, and several stunning Western Tanagers.

One thing about birders is that many have multiple interests. The rare Short-horned Lizard, the various sage species, the amazing natural environment of the southern Black Hills and walking the unique sage lands provided a treat for many. The friendly local residents, illustrated well by our hosts at the Sunrise Ranch, along with Anne Cassens and the folks in Edgemont, also added interest to the weekend. Any attendees with an interest in history, railroading, climate, reptiles and amphibians, butterflies, geology or archaeology got an extra helping. Chatting with the historically minded town matrons at a local steak house or sharing our birding enthusiasm with the Cowboy Inn manager made for great times.

New and first-time birders will likely continue the birding adventure after their Edgemont experience. Indeed, another week would be needed to touch all the birding bases.

With 50 plus registered attendees, great weather, and dedicated guides, at least 129 species were recorded. Special thanks to all our guides: Mark Hollenbeck, Dave Swanson, Jeff Palmer, Jennifer Fowler, Todd Jensen, Nancy Drilling, Michael Melius and others who all who led us to great birds and kept the groups together, and of course, Doug Chapman, who's organizational and logistical talents created a great meeting.

A footnote: The recent tragic fire in White Draw, which spread into Red, Craven, and Elbow Canyons, included many of the areas we birded on the ranch. It has put great hardship on our hosts and their neighbors. We wish them the best in recovering their losses.



## Contents

President's Page.....	55
by Nancy Drilling	
2011 Report of the Rare Bird Records Committee.....	56
by David Swanson	
Fledgling Tracts: Birding Buccaneers .....	61
by Jason Thiele	
Spring 2012 Seasonal Reports .....	64
by Jeffrey S. Palmer	
SDOU Scholarship and Awards.....	74
Committee Report – 2012	
by Jocelyn L. Baker	
2012 Spring Meeting in Edgemont .....	75
by Mick Zerr	
Snowy Owl, Charles Mix, 12/22/2011 .....	Back Cover
Photo: Mick Zerr	